



Virginia Department of
Behavioral Health &
Developmental Services

Update on Training Center Closures

Joint Committee on Training Center Closures

October 28, 2016

Jack Barber, M.D.

Interim Commissioner

Virginia Department of Behavioral Health
and Developmental Services

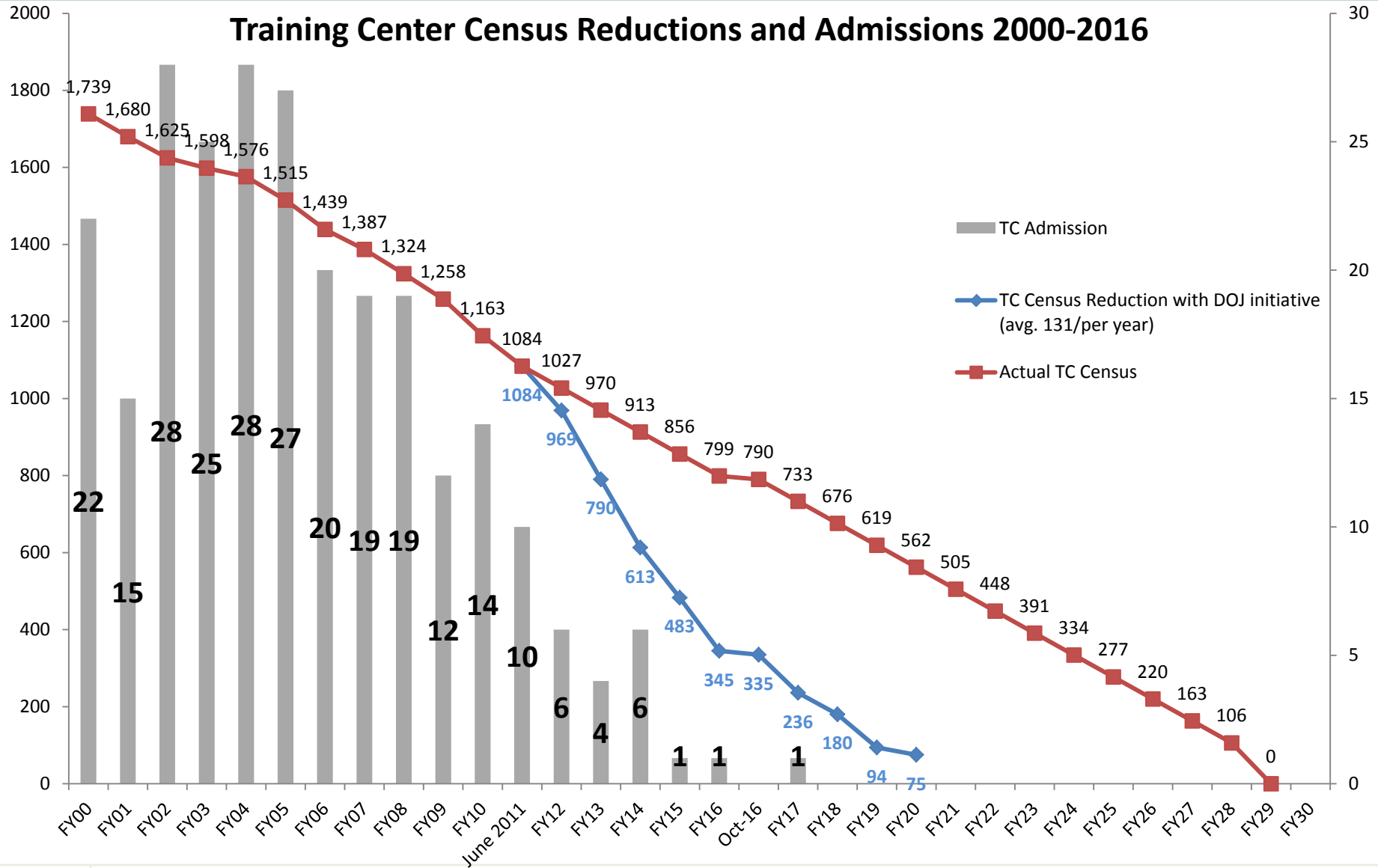
Virginia's Training Centers

October 19, 2016

Name	2000 Census	2010	2012	2014	2015	10/18/ 2016	% Decrease 2000 - Present
Southside (SVTC) Closed 2014	465	267	197	0	0	0	100%
Northern (NVTC) Closed 2016	189	170	153	107	57	0	100%
Southwestern (SWVTC) Closure date: 2018	218	192	173	144	124	87	60%
Central (CVTC) Closure date: 2020	679	426	342	288	233	181 148-ICF 33-NF	73%
Southeastern (SEVTC) Stays open at 75 beds	194	143	104	75	69	67	65%
TOTAL	1,745	1,198	969	614	483	335	81%

Note: A net total of 3 additional discharges will occur during the last week of October 2016: 2 from SWVTC (including 1 transfer to SEVTC), 1 from the CVTC NF, and 1 from SEVTC, which will make the census 331.

Training Center Census Reduction and Admissions 2000-2016



Types of Community Homes Chosen October 1, 2011 – October 18, 2016

Type	Number
Group Home > 4 Beds	227
Group Home < 5 Beds	215
Sponsored Residential	41
ICF* > 4 Beds	26
ICF < 5 Beds	56
ICF Transferred to Another TC	21
Nursing Facility	28
Family Home	5
Interstate Transfer	5
State Facility	1
Leased Apartment	1
Total	626

* ICF = Intermediate Care Facility

NVTC Discharges Home Types

Type	Number
Group Home > 4 Beds	32
Group Home < 5 Beds	78
Sponsored Residential	3
ICF > 4 Beds	5
ICF < 5 Beds	13
ICF Transferred to Another TC	3
Nursing Facility	2
Family Home	1
Interstate Transfer	1
Leased Apartment	1
Total	139

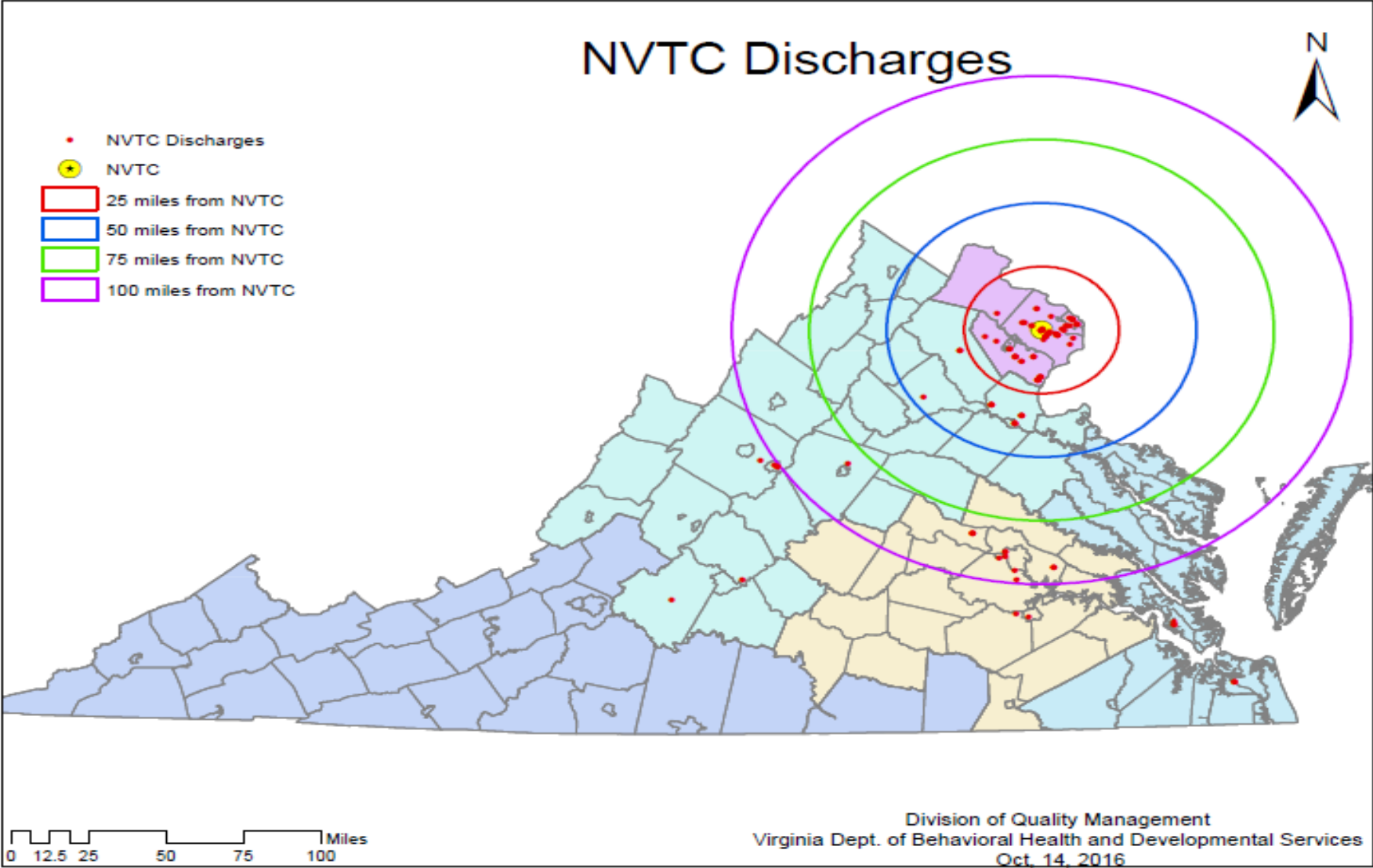
N VTC Discharges

The last of the 139 NVTC Residents was Discharged in January 2016

Region	Residents
Moves within Region 2	108
Moves out of the region	31
• Region 1	9
• Region 4	16
• Region 5	5
• Out of State	1
Reasons for Out of Region Moves	
• Chose to be closer to Family	14
• Had options within the region, but chose services out of the region	10
• Had no preference for location	6
• Transferred to Hiram Davis Medical Center	1

Note: 3 Individuals were discharged to training centers (2 CVTC and 1 SEVTC) who have now been discharged to homes in the community in Region 2

NVTC Discharge Map



SWVTC (Region 3) Background Information

- DBHDS Region 3 consists of:
 - 10 Community Services Boards (CSBs),
 - 35 counties and cities
 - Covers approximately a 270 miles radius from SWVTC
- There has been a 39 percent reduction in census at SWVTC since 2012 with 73 discharges.
- The majority of the individuals have moved within their home region (Region 3).

SWVTC Updates

- **87 Individuals remain at SWVTC**
 - 17 individuals have identified homes
 - 3 additional individuals have providers ready to support them and families are making final decisions
 - 8 individuals are actively considering their options
- **Census is expected to reach:**
 - 65 by June 30, 2017
 - 0 by June 30, 2018
- Providers to serve individuals with intensive medical and behavioral supports are in development.

Summary of SWVTC Census and Provider Capacity Status (Sept. 9, 2016)

Southwestern Virginia Training Center

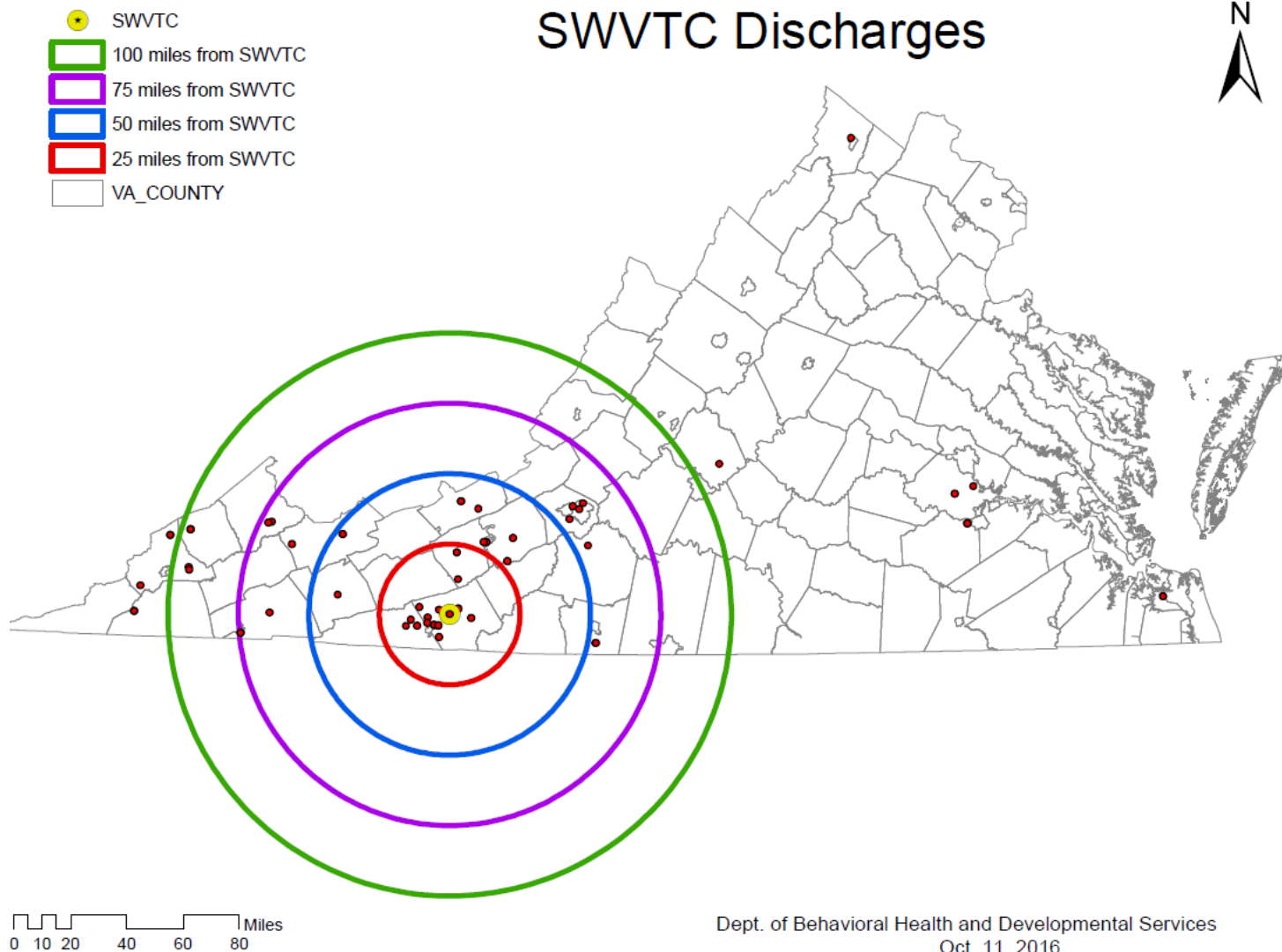
Closure: 2018

Current Census	87
Providers currently available in the area	16
Available beds	33
Providers in development in the area	9
Number of beds in development	66
Total number of beds that will be available by 2017	99

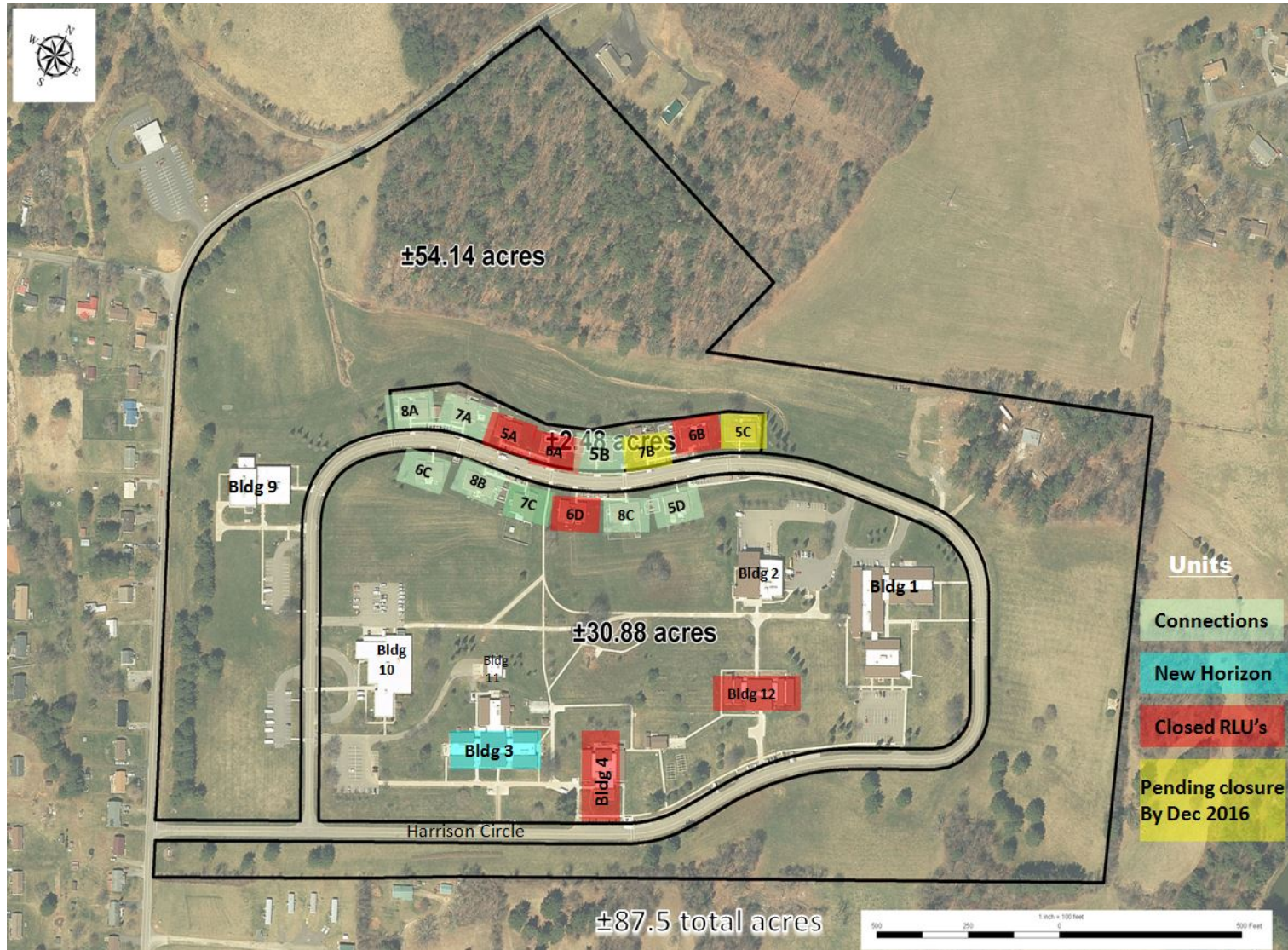
SWVTC Discharges Home Types

Type	Number
Group Home > 4 Beds	28
Group Home < 5 Beds	16
Sponsored Residential	21
ICF > 4 Beds or 5 Beds	0
ICF < 6 Beds	2
ICF Transferred to Another TC	2
Nursing Facility	0
Family Home	2
State Facility	1
Interstate Transfer	1
Total	73

SWVTC Discharge Map



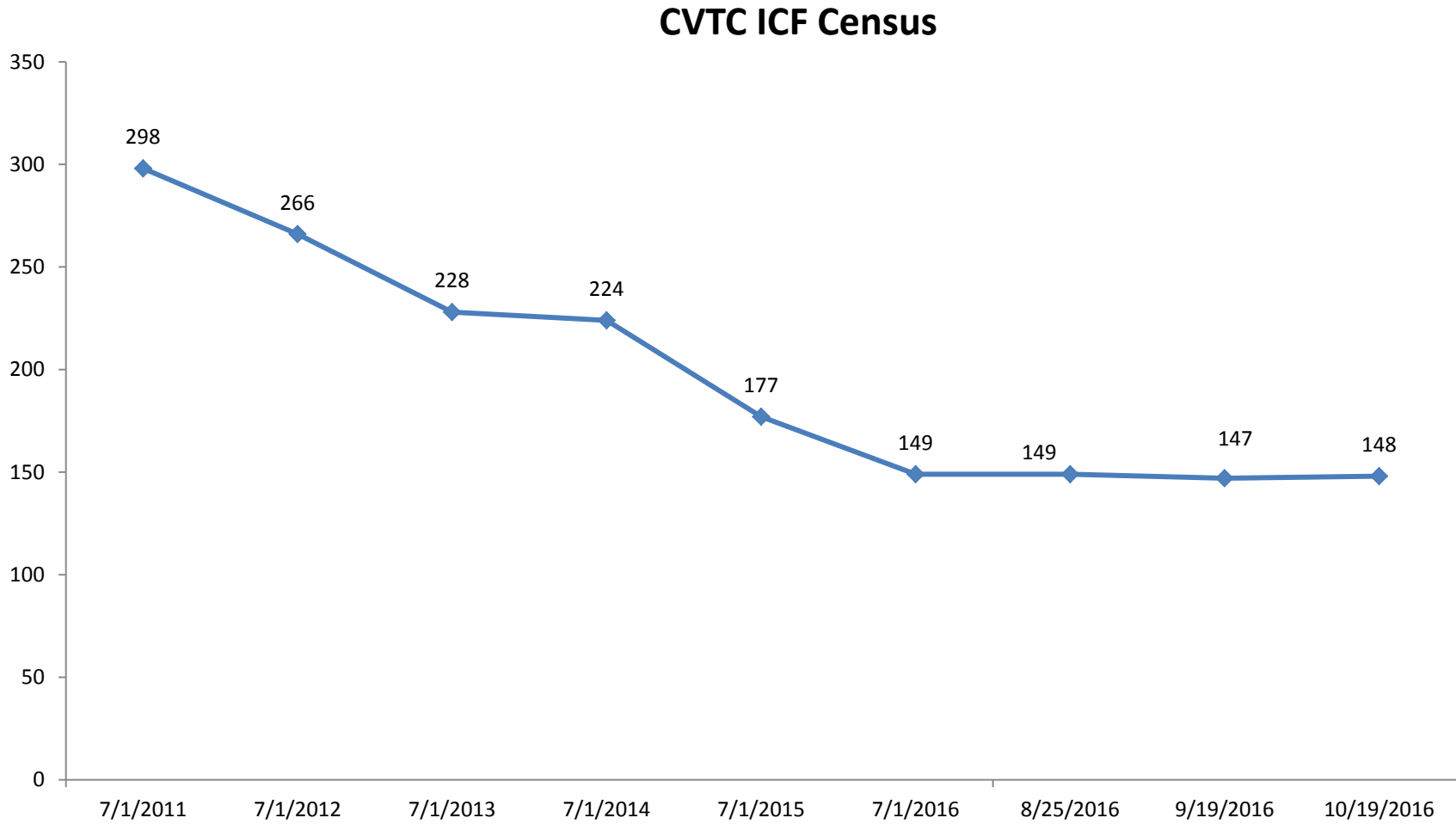
SWVTC Building Status



CVTC (Region 1) Update

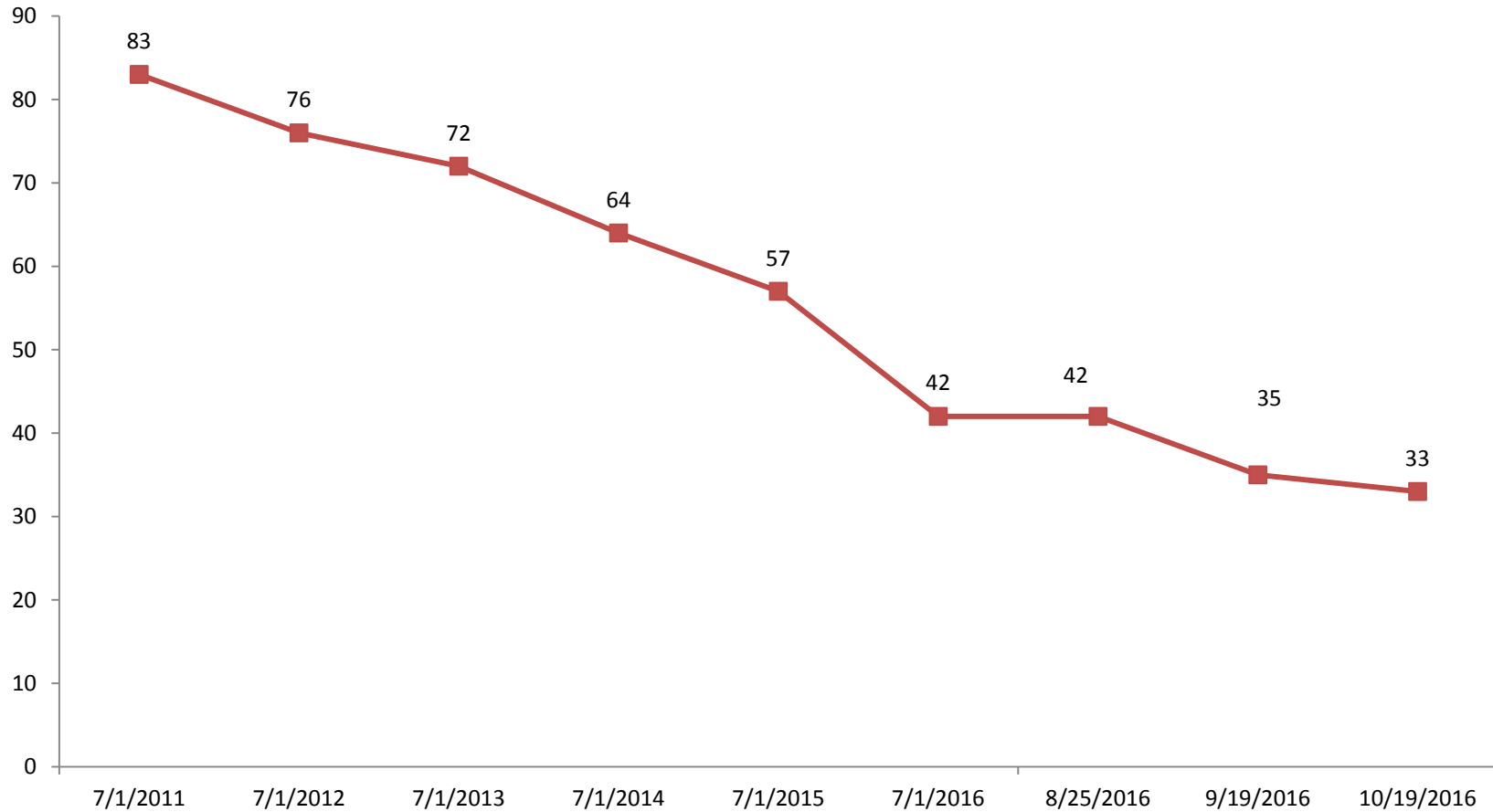
- CVTC is unique because they have individuals from all the regions in Virginia.
- 34 of the 40 CSBs provide case management to the residents at CVTC.
- There has been a 39 percent reduction in census at CVTC since 2012 with 146 discharges.

CVTC ICF Census



CVTC NF Census

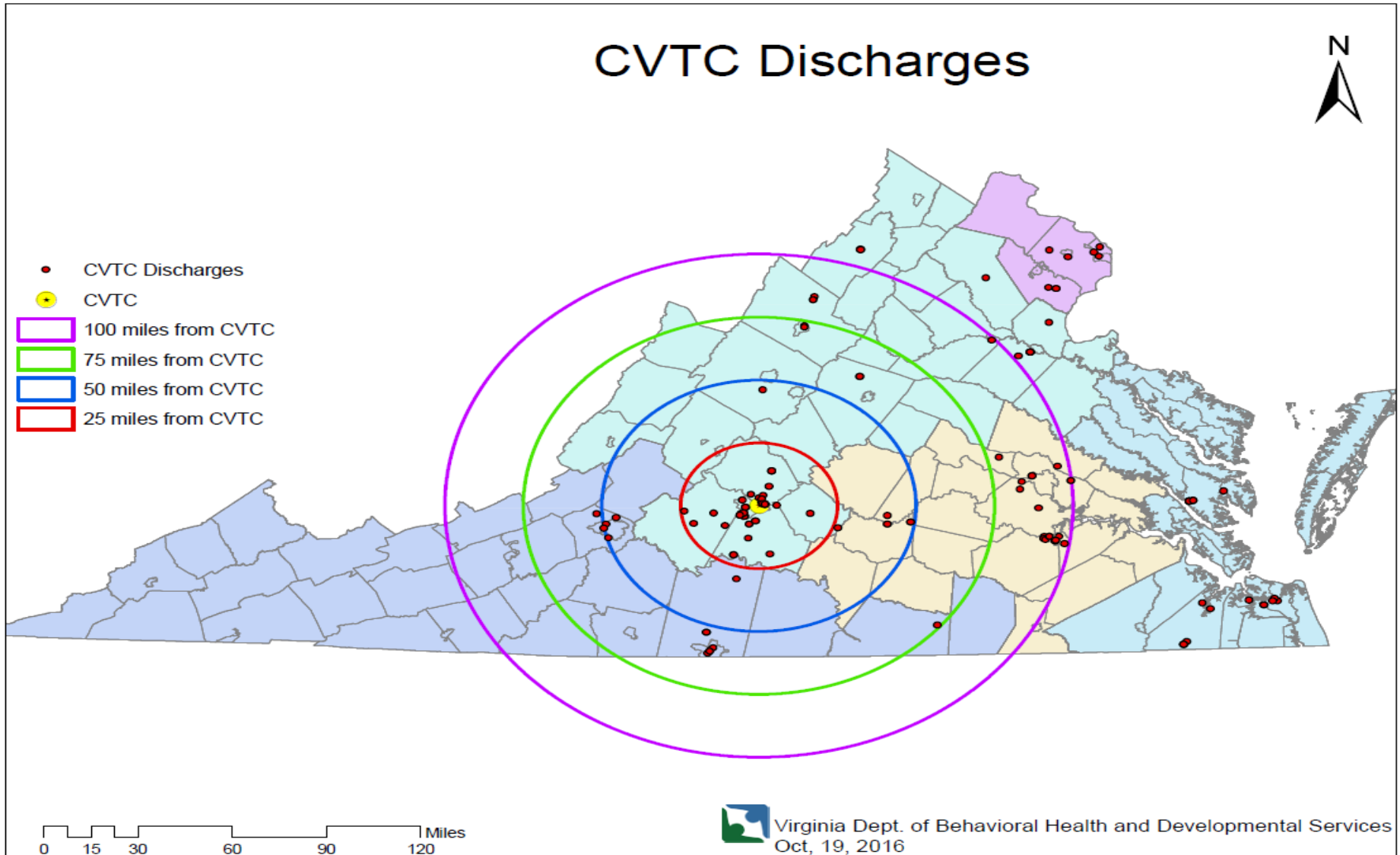
CVTC NF Census



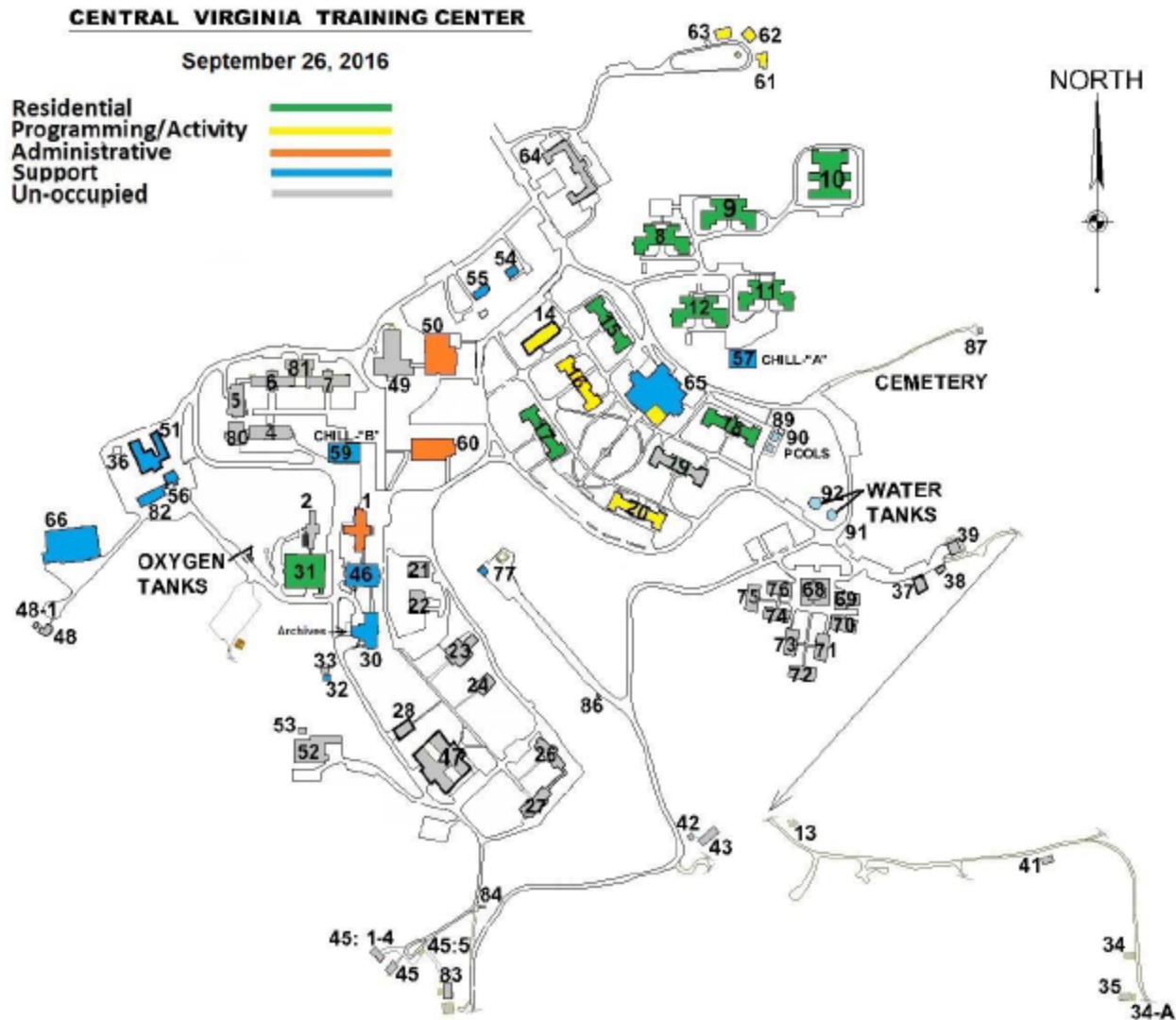
CVTC Discharges Home Types

Type	Number
Group Home > 4 Beds	44
Group Home < 5 Beds	53
Sponsored Residential	13
ICF > 4 Beds	19
ICF < 5 Beds	6
ICF Transferred to Another TC	3
Nursing Facility	4
Family Home	1
Interstate Transfer	3
Total	146

CVTC Discharge Map



CVTC Building Status



CVTC Skilled Nursing Facility (SNF)

- In August, DBHDS announced the plan for decertification of nursing facility beds and reclassification to ICF beds.
- Decertifying the nursing beds and using already certified ICF beds allows DBHDS to be proactive in developing options prior to the inability to staff the nursing facility as CVTC closes down all the units on the upper campus, including the nursing facility in Building 31.

Reasons for Decertifying the Nursing Facility

- Residents' needs are most often met on their own units.
- If an individual requires more medical care, he or she is transferred to the infirmary—routinely returning to their unit rather than needing to transfer to the SNF.
- There has been a 61 percent census reduction in the SNF over the past 5 years, with the current census at 34.
- There are increased discharges from the nursing facility directly to community homes, (the same is true at HDMC) as more community providers are developed.
- CVTC has a current nursing position vacancy rate of 38.11 percent. It will be severely challenged to maintain critical staffing levels required to meet the level of care for all of the individuals. It will also be challenged to maintain/meet federal nursing facility standards beyond December 2016.

Individuals at the Nursing Facility

- Of the current 33 residents, it is projected that six individuals will continue to need nursing facility level of services.
- There are 14 discharges scheduled by Dec. 31, 2016, which will bring the nursing facility census to 20:
 - 7 Individuals will be discharged to their choice of community NF or Hiram Davis Medical Center
 - 6 Individuals have community homes identified
 - 1 Individual will be transferred internally from CVTC's nursing facility to an ICF bed in another unit
 - For now, the remaining 20 individuals will stay in Building 31 (as an ICF/IID unit)

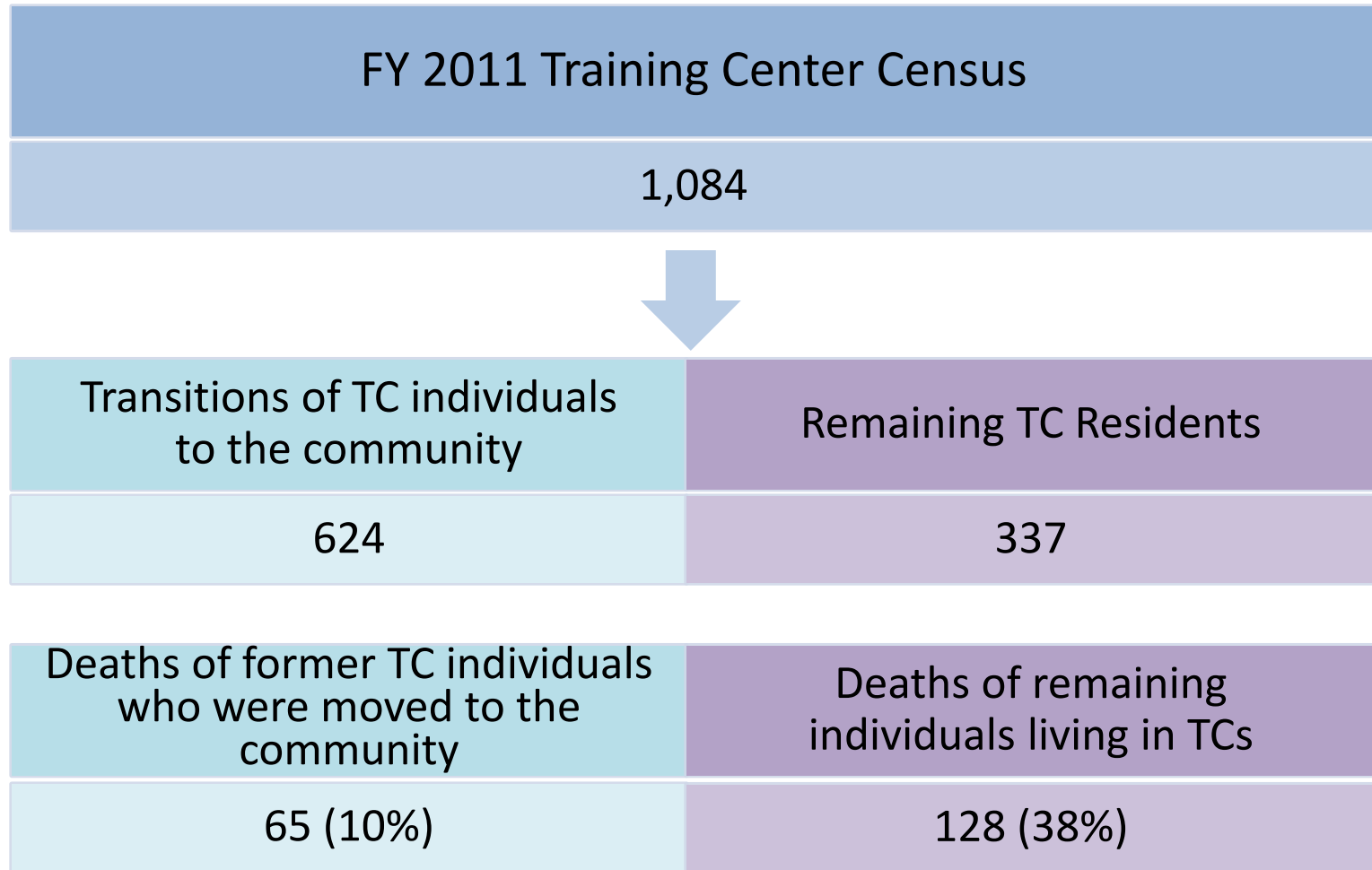
Survival Analysis

- Survival analysis was conducted among all individuals reported to be living within the five training centers (TC) on or after January 1, 2006 until August 9, 2016.
- Kaplan Meier Survival analysis was used to compare survival of Individuals by Discharge status.
- Survival Proportions, mean and median survival times were compared among individuals “discharged” and individuals “not discharged”.

Survival Analysis Results

- A total of 1,679 individuals resided in the training center from January 1, 2006 to August 1, 2016.
- A total of 1,016 individuals (61%) were discharged from the TC from January 1, 2006 to August 1, 2016:
 - Among the 1,016 discharged, a total of 100 deaths (10%) were reported.
- A total of 663 (39%) were not discharged:
 - 350 individuals remained living in TC on August 1, 2016
 - 313 individuals died while living within TC.
 - compared to 313 of (663 not discharged) deaths (47%) among those not discharged.

October 2011 to October 11, 2016



Note: Dates above correspond to the discharge processes required by the DOJ Settlement Agreement

General Assembly Trust Fund Actions

Housing Development – Provide \$750,000 in FY 2016 and \$4.0 million in FY 2017 for housing development.

- The FY 2016 proceeds are to be used for one-time capital and transition costs associated with the development of community-based waiver group homes and/or community based ICFs for individuals with I/DD who are transitioning from SWVTC and who choose to remain in Southwest Virginia. The housing options are to be located in Virginia no farther than 100 miles from SWVTC.
- Funding in FY 2017 is for one-time expenses for developing housing options, specialized services and making capital improvements to enhance and expand services for individuals with I/DD. A minimum of 60 percent of the appropriation must be used to build additional capacity in Northern Virginia, while the remaining is for individuals transitioning from SWVTC (within 100 miles of SWVTC).

Bridge/Transitional Funds – Use \$1.1 million to support transition services for individuals in training centers. This replaced general fund dollars included in the introduced budget.

- \$636K in FY 2017
- \$480K in FY 2018

FY 2016 Trust Fund Expenditures

FY 2016 Budget	FY 2016 Expenditures	Variance
\$750,000	\$350,000	\$400,000

FY 2016 expenditures were intended to support the development of group homes in South West Virginia to assist individuals discharging from SWVTC. In an effort to maximize the number of available qualified providers, all contracts will not be awarded until this fiscal year. DBHDS has requested the unspent June 30, 2016, balance to be brought forward.

FY 2017 Trust Fund Expenditures

Category	FY 2017 Budget	FY 2017 Expenditures (as of 9/30/2016)	Dollars Remaining
Housing Development	\$4,400,000	\$0	\$4,400,000
Bridge/Transitional Funding	\$636,000	\$365,196	\$270,084
Total	\$5,036,000	\$365,196	\$4,670,804

FY 2017 Housing Development funding will be used:

- To develop two (2) Crisis home services (youth and adult) to include start up costs. The services will be located in the Northern Region (\$2.4M)
 - RFP is in development and will be released by December 2016.
- To develop SWVTC providers (\$1.6M)
 - Procurement process completed.
 - Next step: Award the providers.

FY 2017 Bridge/Transitional Funding will be used for:

- One-time transitional needs (assistive technologies, home modifications, vehicle modifications, etc.) for individuals exiting the training centers.

Current Trust Fund Balance Sheet

Property Sales	Amount
Sale of Land at Piedmont (FY 2009)	\$20,421.00
Sale of one acre at Catawba Hospital (April 2013)	\$7,484.00
Sale of Petersburg Parcel (VDOT related)	\$8,400.00
SEVTC Proceeds	\$325,977.00
SEVTC Proceeds	\$1,665,932.00
Sale of 25 acres at Petersburg Complex (December 19, 2013)	\$406,204.08
Interest Earned	\$39,118.55
Sale of 16.256 Acres to Dominion - Petersburg Campus	\$235,131.25
Sale of 65 acres at Southeastern Virginia Training Center	\$5,211,087.00
NVTC Transfer to DMV	\$2,000,000.00
ESH Transfer to DMV	\$375,000.00
Total, Land Sale Proceeds	\$10,294,754.88
Obligations Against Trust Fund	Amount
Bond Defeasance SEVTC FY 2014	\$1,966,801.00
Community ID/DD Services FY 2016 ¹	\$5,400,000.00
Conversion of Two Providers of Congregate Day Services (FY 2016 Appropriation)	\$750,000.00
Housing Development (FY 2017 Appropriation)	\$4,000,000.00
Transitional Funding (FY 2017 Appropriation) ²	\$636,000.00
Transitional Funding (FY 2018 Appropriation) ²	\$480,000.00
Total, Obligations	\$13,232,801.00
Net Fund Position³	(\$2,938,046.12)

¹ The GA reduced the General Fund for community programs in FY 2015 and replaced it with Trust Fund appropriations.

² The GA reduced the General Fund for transitional programs in FY 2017 and FY 2018 and replaced it with Trust Fund appropriations.

³ Net fund position will change once NVTC land sale proceeds are finalized.

FY 2018 Trust Fund Plans

DBHDS has requested the appropriation of the following in FY 2018 from the projected proceeds from the sale of NVTC.

Possible Trust Fund Expenditure	Description	Cost
Behavioral/Medical Intense Programs	Develop providers to provide services and supports to individuals with significantly challenging behaviors and/or who also have complex medical support needs.	\$4,500,000
Request for Proposal (RFP) for out of State Individuals	Develop providers in Virginia who will serve the 14 individuals with IDD who currently live in out-of-state congregate care settings due to their significant behavioral support needs.	\$2,000,000
Capital Subsidy for Rental Housing	Provide funding to subsidize the capital costs associated with rental units dedicated to housing individuals with IDD in the DOJ target population.	\$1,250,000
House Call Program	Create a regional home care visit service to ensure adequate medical care for transitioning people from nursing facilities into the community.	\$500,000
Individual Crisis Events	Provide additional one time supports in the community for individuals in crisis.	\$300,000
Total		\$8,550,000