

Jefferson College of Health Sciences Merger

RADFORD
UNIVERSITY

October 23, 2018

Public-Private Partnership



Jefferson College
of **Health Sciences**

RADFORD
UNIVERSITY

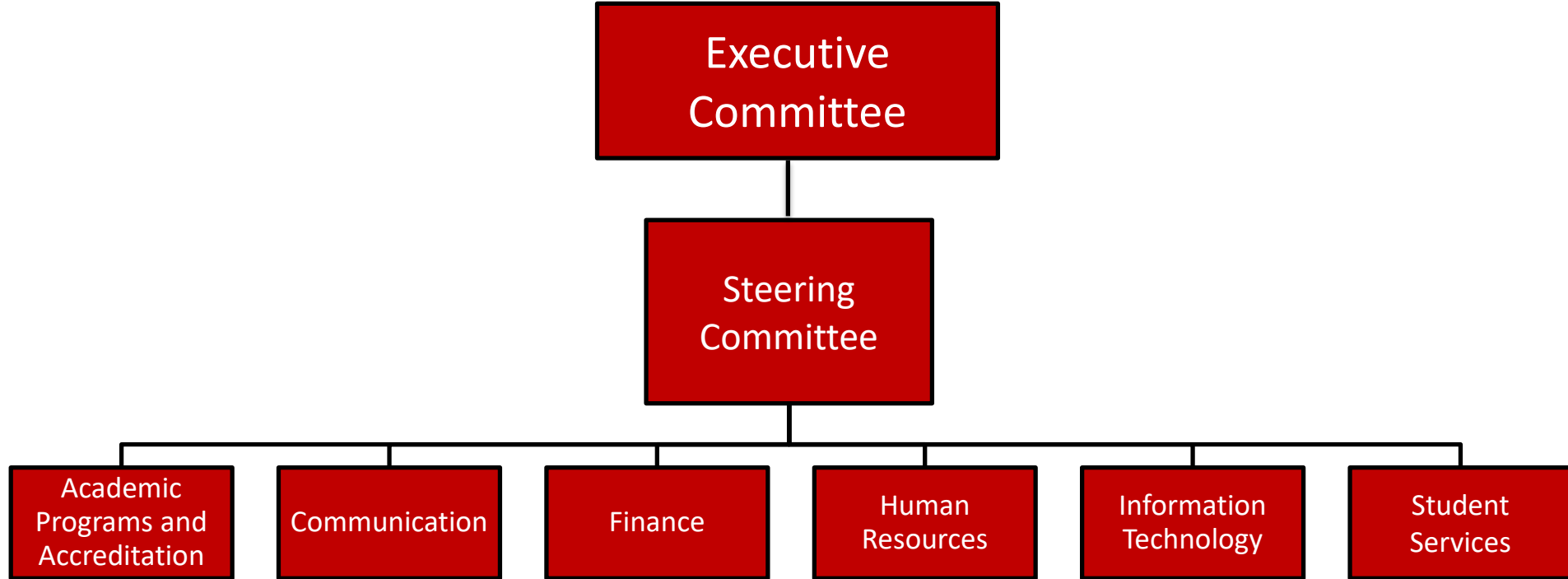
January 2018 Announcement



Jefferson College of Health Sciences Merger

RADFORD UNIVERSITY

Transition Structure



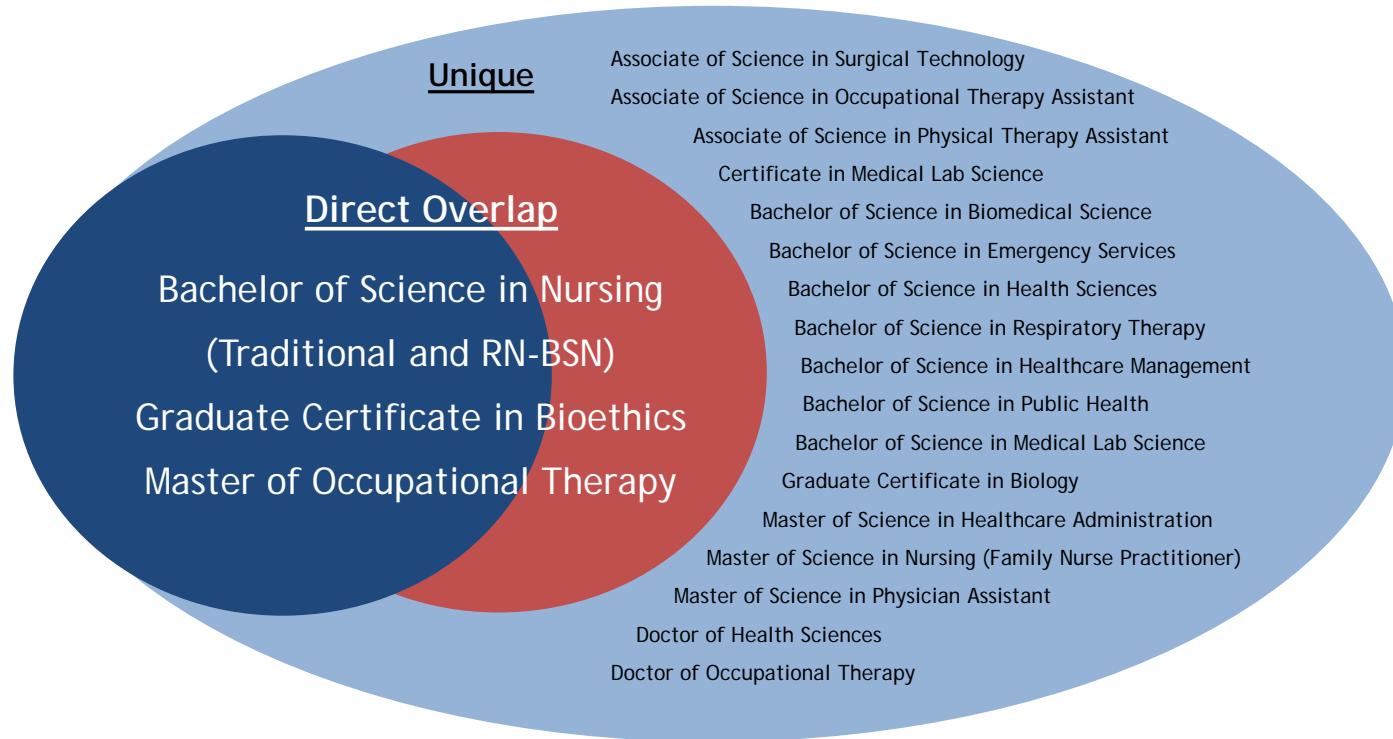
The Institutions At-A-Glance

Category	Radford University	Jefferson College of Health Sciences
Type	Comprehensive Public University	Private Health Sciences College
Focus	Liberal Arts	Health Sciences
Campus	204 acre traditional residential campus	~100,000 sq. ft. urban clinical campus
Location	Radford, Virginia	Roanoke, Virginia
Offerings	0 Associates Programs	3 Associates Programs
	12 Certificates (incl. UG & GR)	3 Certificates (incl. UG & GR)
	38 Bachelor Programs	9 Bachelor Programs
	16 Master Programs	5 Master Programs
	3 Doctoral Programs	2 Doctoral Programs
	69 Total Program Offerings	22 Total Program Offerings
Accreditation	Southern Association of Colleges and Schools Commission on Colleges (SACSCOC)	Southern Association of Colleges and Schools Commission on Colleges (SACSCOC)

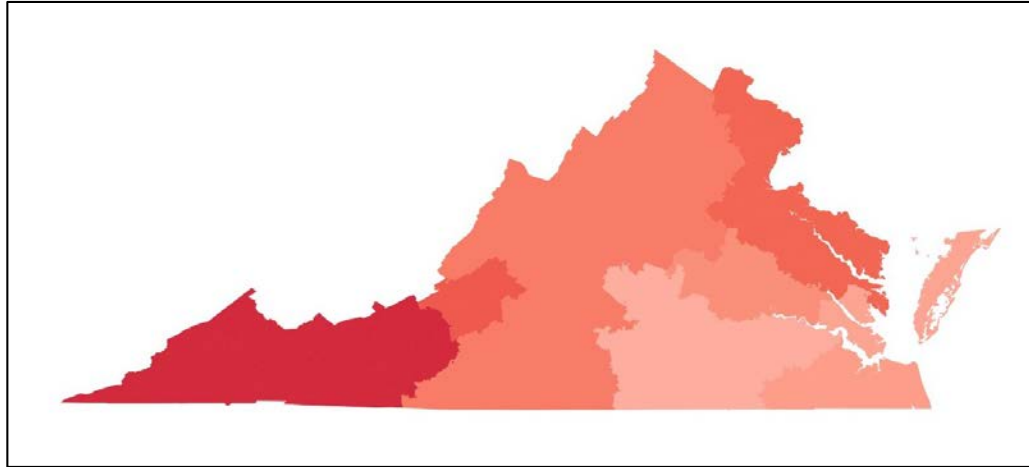
Jefferson College Current State

- No debt obligations
- No physical infrastructure or deferred maintenance
- Operations in Carilion Roanoke Community Hospital
- Operations fully self-supporting
- Strong demand with sustained enrollment growth
- Limited general fund support (*i.e. \$1.7 million request*)

Degree Program Overlap

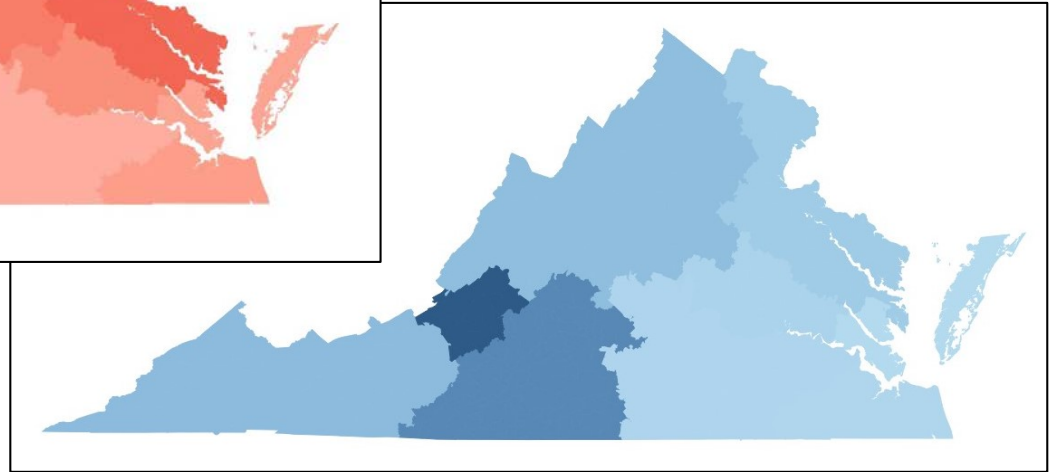


College Population Representation



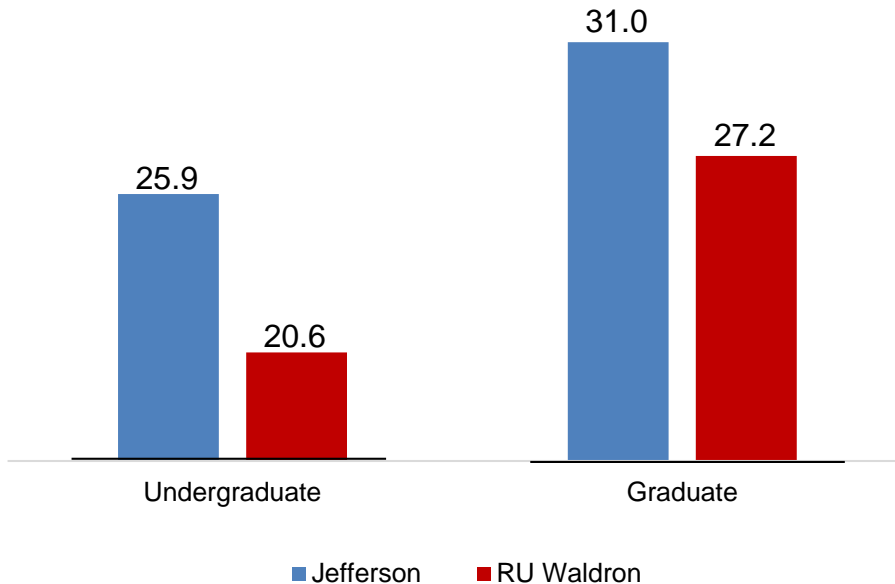
↑ Radford University's Waldron College

Jefferson College of Health Sciences ↓



College Average Student Age

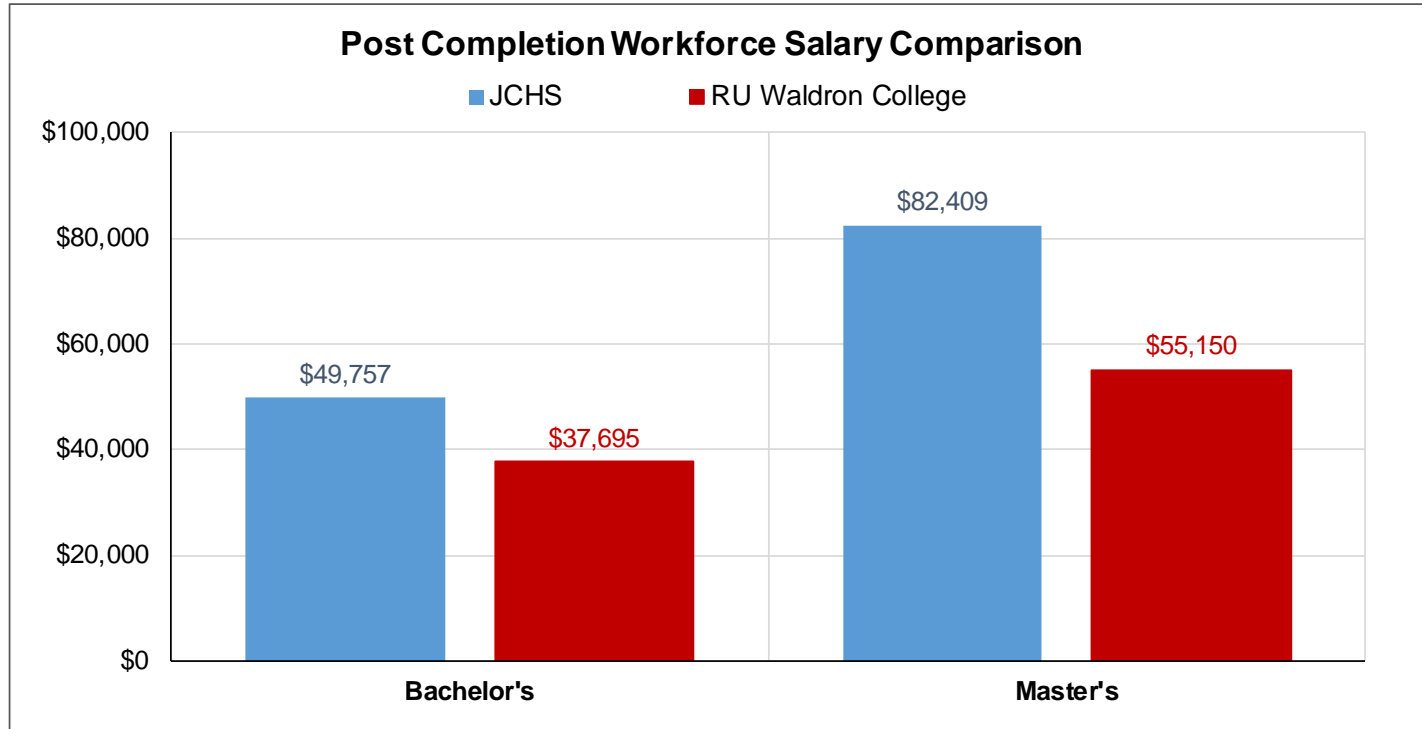
Average Age by Enrollment Level



Select Jefferson Programs

Select Jefferson Programs	Avg. Age
Health Sciences, Doctorate	40.4
Occupational Therapy, Doctorate	37.6
Nursing, Master's	36.7
Healthcare Administration, MHA	31.8
Physician Assistant, Master's	26.1
Occupational Therapy, Master's	25.1

College Entry Salaries





NURSING SHORTAGE

Institutional Experience Comparison



Institutional Experience Comparison

Radford University students seek:

Exploration - Traditional **Liberal Arts** experience providing general knowledge of a wide range of subjects and a deeper exploration of ones self

A high level of student-teacher interaction, mentorship, and **collaboration**

Residential style campus providing greater opportunities for student **life experiences**, such as fraternities and sororities, campus wellness center, recreational sports, and clubs

Competitive job placement and entry level salaries compared statewide

Jefferson College students seek:

Focused Intensive Experience - Highly competitive and focused Health Sciences education tailored to the adult learner with part-time options

Unique **hands-on** experiences working with national leaders in all areas of healthcare

Desire to interface with health care professionals on a daily basis in a **hospital setting**

Sought-after degree with 93% **job placement** and potential for higher entry level salaries

Financial Viability and Business Model



RADFORD
UNIVERSITY



Jefferson College
of Health Sciences
at **CARILION CLINIC**

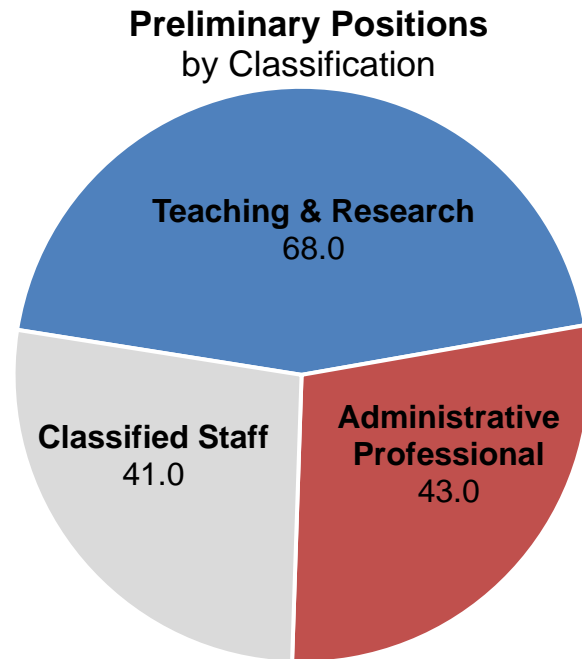

CARILION CLINIC

Jefferson College E&G Operations

	JCHS Financials	Preliminary Allocations
Total Revenue	\$22,643,678	\$22,341,670
Personal Services	\$14,972,577	\$14,642,525
Non-Personal Services	6,156,067	6,651,085
Total Direct Expense	\$21,128,644	\$21,293,609
Returned Support	1,515,034	1,048,061
Total Expenses	\$22,643,678	\$22,341,670
Net Surplus/(Deficit)	\$0	\$0

Jefferson College Personnel Operations

- Jefferson College currently maintains 152.0 position allocations.
- The Radford University model for Jefferson College operations is also built to support 152.0 positions.
 - 12-month employees transition **July 13, 2019**
 - 9-month employees transition **August 10, 2019**



Current Undergraduate Costs

	<u>Jefferson</u>	Radford	
		<u>In-State</u>	<u>Out-of-State</u>
Undergraduate (Annual)			
Tuition	\$26,416	\$7,922	\$19,557
Technology Fee	470	58	58
Capital Fee	-	-	447
Subtotal Tuition & E&G Fees	\$26,886	\$7,980	\$20,062
Comprehensive Fee	-	3,230	3,230
Total Undergraduate - Mandatory	\$26,886	\$11,210	\$23,292
Room - Standard Double	-	5,281	5,281
Board - 19 Meal Plan	-	4,229	4,229
Total Undergraduate	\$26,886	\$20,720	\$32,802

Current Graduate Costs

	<u>Jefferson</u>	Radford	
		<u>In-State</u>	<u>Out-of-State</u>
Graduate (PCH)			
Tuition	\$765	\$371	\$726
Technology Fee*	20	3	3
Capital Fee	-	-	19
Subtotal Tuition & E&G Fees	\$785	\$375	\$748
Comprehensive Fee	-	135	135
Total Graduate	\$785	\$509	\$882

Revenue Comparison

	<u>JCHS Financials</u>	<u>Preliminary Allocations</u>
Revenue		
Non-General Fund		
Tuition and Fees	\$25,761,360	\$23,758,415
Scholarships	(3,293,215)	(3,300,000)
Net Receivables	\$22,468,145	\$20,458,415
Sales & Services	133,184	133,484
Other Revenue	42,349	42,349
Total Non-General Fund	\$22,643,678	\$20,634,248
General Fund	0	1,707,422
Total Revenue	\$22,643,678	\$22,341,670

Wrap-Up and Discussion



Jefferson College of Health Sciences Merger

RADFORD
UNIVERSITY

October 23, 2018