

# **Results of the 2008-2009 Required Local Effort and Required Local Match Data Collection**

**Presented to the  
House Appropriations Subcommittee on Elementary  
and Secondary Education**

January 27, 2009

Kent C. Dickey  
Assistant Superintendent for Finance  
Virginia Department of Education



# Presentation Overview

- Section 22.1-97, *Code of Virginia*, directs the Superintendent of Public Instruction to provide a report annually to the House Committees on Appropriations and Education and the Senate Committees on Finance and Education and Health on the degree to which each school division has met, failed to meet, or surpassed its required local expenditure in support of the Standards of Quality (SOQ).
- This report provides the results of calculations made to ensure that each school division has expended or appropriated (depending upon the year under review) sufficient local operational expenditures to support its local share of the cost of the Standards of Quality and required local match (required local matching funds for accounts outside of the SOQ).



# Presentation Overview, continued

- The 2008-2009 report was submitted to the General Assembly in January 2009.
- Department of Education staff prepared the actual fiscal year 2008 required local effort and required local match sections of this report based on 2007-2008 Annual School Report Financial Section (ASRFIN) data submitted by school divisions.
- The budgeted required local effort and required local match sections of this report are based on a separate data collection of school divisions' budgeted fiscal year 2009 expenditures.



# Actual FY 2008 Required Local Effort

## Actual Required Local Effort for the Standards of Quality - *Fiscal Year 2008*

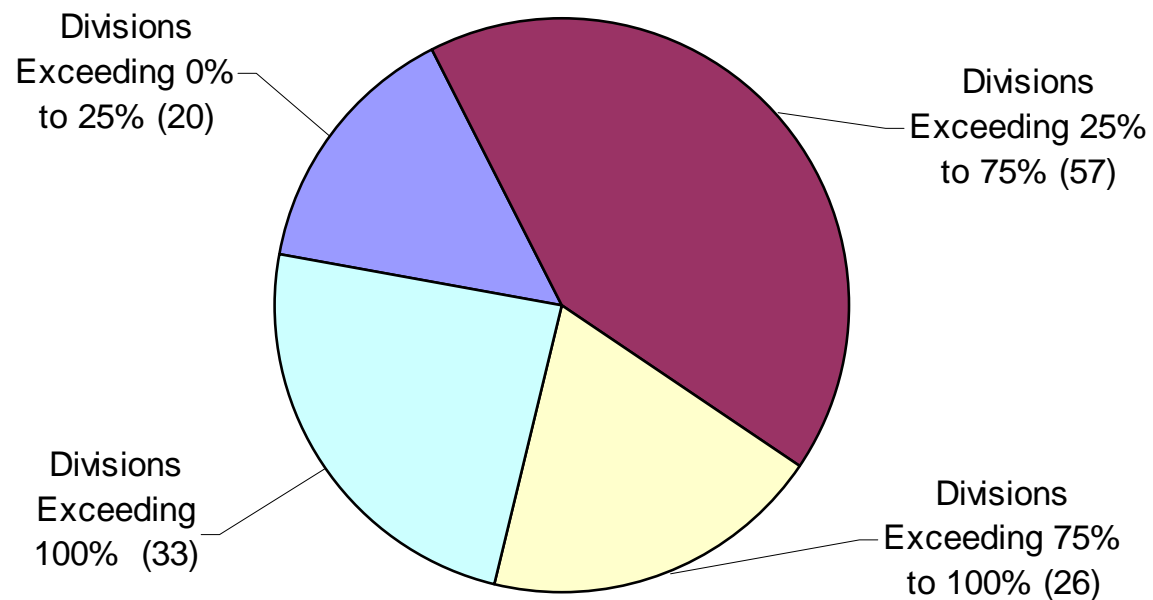
All reporting school divisions exceeded required local effort for fiscal year 2008. The range of local support in excess of the required amount is:

- Low – Nottoway – 0.62% in excess of the required amount
- High – Sussex – 263.68% in excess of the required amount
- The average local support in excess of the required level for FY 2008: 72.9%



# Actual FY 2008 Required Local Effort. continued

Distribution - Percent of FY08 Actual Local Expenditures for Operations Above Required Local Effort for SOQ



# Actual FY 2008 Required Local Effort, continued

**FY 2008 Actual Required Local Effort (RLE) for the Standards of Quality**  
RLE Based on Chapter 847, 2008 Acts of Assembly, and  
Final March 31, 2008, Average Daily Membership (ADM)

Div. Num.	Division Name	FY 2008 Required Local Effort <sup>1</sup>	FY 2008 Actual Local Expenditures for Operations <sup>2</sup>	FY 2008 Actual Local Expenditures for Operations Above RLE	Percent of FY 2008 Actual Local Expenditures for Operations Above RLE
001	ACCOMACK	10,219,586	14,085,412	3,865,826	37.83%
002	ALBEMARLE	44,539,973	100,159,821	55,619,848	124.88%
003	ALLEGHANY	4,373,756	9,636,994	5,263,238	120.34%
004	AMELIA	3,891,014	4,497,258	606,244	15.58%
005	AMHERST	7,872,938	12,715,246	4,842,308	61.51%
006	APPOMATTOX	3,585,068	4,030,081	445,013	12.41%
007	ARLINGTON	95,224,644	282,319,878	187,095,234	196.48%
008	AUGUSTA	20,338,617	31,003,806	10,665,189	52.44%
009	BATH	3,819,632	6,953,321	3,133,689	82.04%
010	BEDFORD	19,800,330	28,169,209	8,368,879	42.27%
011	BLAND	1,813,336	1,978,114	164,778	9.09%
012	BOTETOURT	11,723,293	18,573,172	6,849,879	58.43%
013	BRUNSWICK	3,470,132	4,445,199	975,067	28.10%
014	BUCHANAN	7,073,756	9,323,757	2,250,001	31.81%
015	BUCKINGHAM	3,369,548	5,114,253	1,744,705	51.78%
016	CAMPBELL	12,452,158	17,451,359	4,999,201	40.15%
017	CAROLINE	8,135,493	11,964,273	3,828,780	47.06%
018	CARROLL	6,641,154	9,633,568	2,992,414	45.06%
019	CHARLES CITY	2,512,279	4,800,654	2,288,375	91.09%
020	CHARLOTTE	2,953,224	3,368,195	414,971	14.05%
021	CHESTERFIELD	118,211,803	231,334,407	113,122,604	95.69%
022	CLARKE	7,216,276	10,428,818	3,212,542	44.52%



# Actual FY 2008 Required Local Effort, continued

Div. Num.	Division Name	FY 2008 Required Local Effort <sup>1</sup>	FY 2008 Actual Local Expenditures for Operations <sup>2</sup>	FY 2008 Actual Local Expenditures for Operations Above RLE	Percent of FY 2008 Actual Local Expenditures for Operations Above RLE
023	CRAIG	1,471,892	1,701,086	229,194	15.57%
024	CULPEPER	17,501,337	27,937,638	10,436,301	59.63%
025	CUMBERLAND	2,520,742	4,772,603	2,251,861	89.33%
026	DICKENSON	3,719,497	5,845,303	2,125,806	57.15%
027	DINWIDDIE	7,623,781	11,775,347	4,151,566	54.46%
028	ESSEX	4,008,292	5,922,100	1,913,808	47.75%
029	FAIRFAX	756,578,598	1,566,934,533	810,355,935	107.11%
030	FAUQUIER	42,192,157	75,628,941	33,436,784	79.25%
031	FLOYD	4,058,270	5,574,116	1,515,846	37.35%
032	FLUVANNA	7,819,990	13,831,680	6,011,690	76.88%
033	FRANKLIN	17,174,187	23,891,444	6,717,257	39.11%
034	FREDERICK	30,024,325	59,068,659	29,044,334	96.74%
035	GILES	4,240,111	5,997,934	1,757,823	41.46%
036	GLOUCESTER	11,173,528	21,939,866	10,766,338	96.36%
037	GOOCHLAND	11,179,604	17,931,666	6,752,062	60.40%
038	GRAYSON	3,709,718	4,876,333	1,166,615	31.45%
039	GREENE	5,598,613	9,912,247	4,313,634	77.05%
040	GREENSVILLE	2,216,598	3,250,312	1,033,714	46.64%
041	HALIFAX	8,724,909	14,115,748	5,390,839	61.79%
042	HANOVER	45,695,263	75,458,909	29,763,646	65.14%
043	HENRICO	129,944,438	176,452,773	46,508,335	35.79%
044	HENRY	10,937,925	13,233,599	2,295,674	20.99%
045	HIGHLAND	1,493,444	1,750,183	256,739	17.19%
046	ISLE OF WIGHT	11,347,702	22,974,592	11,626,890	102.46%
047	JAMES CITY	29,260,711	62,310,568	33,049,857	112.95%



# Actual FY 2008 Required Local Effort, continued

Div. Num.	Division Name	FY 2008 Required Local Effort <sup>1</sup>	FY 2008 Actual Local Expenditures for Operations <sup>2</sup>	FY 2008 Actual Local Expenditures for Operations Above RLE	Percent of FY 2008 Actual Local Expenditures for Operations Above RLE
048	KING GEORGE	9,284,840	10,748,069	1,463,229	15.76%
049	KING QUEEN	2,247,690	4,664,515	2,416,825	107.52%
050	KING WILLIAM	4,285,935	6,459,614	2,173,679	50.72%
051	LANCASTER	5,346,274	8,879,364	3,533,090	66.09%
052	LEE	4,356,593	8,587,608	4,231,015	97.12%
053	LOUDOUN	226,248,577	519,857,070	293,608,493	129.77%
054	LOUISA	14,650,380	23,083,447	8,433,067	57.56%
055	LUNENBURG	2,479,216	3,026,247	547,031	22.06%
056	MADISON	5,124,179	7,094,109	1,969,930	38.44%
057	MATHEWS	3,792,203	5,454,735	1,662,532	43.84%
058	MECKLENBURG	8,948,254	10,253,736	1,305,482	14.59%
059	MIDDLESEX	4,616,696	6,533,407	1,916,711	41.52%
060	MONTGOMERY	20,890,311	35,934,089	15,043,778	72.01%
062	NELSON	6,236,226	10,023,773	3,787,547	60.73%
063	NEW KENT	6,455,428	10,129,157	3,673,729	56.91%
065	NORTHAMPTON	4,876,899	7,486,045	2,609,146	53.50%
066	NORTHUMBERLAND	5,886,100	8,341,214	2,455,114	41.71%
067	NOTTOWAY	3,461,095	3,482,398	21,303	0.62%
068	ORANGE	13,294,151	16,546,340	3,252,189	24.46%
069	PAGE	5,987,391	8,247,482	2,260,091	37.75%
070	PATRICK	4,136,686	4,986,561	849,875	20.54%
071	PITTSYLVANIA	13,768,153	15,115,334	1,347,181	9.78%
072	POWHATAN	9,524,048	18,934,791	9,410,743	98.81%
073	PRINCE EDWARD	4,187,190	7,158,251	2,971,061	70.96%
074	PRINCE GEORGE	8,310,985	13,112,076	4,801,091	57.77%





# Actual FY 2008 Required Local Effort, continued

Div. Num.	Division Name	FY 2008 Required Local Effort <sup>1</sup>	FY 2008 Actual Local Expenditures for Operations <sup>2</sup>	FY 2008 Actual Local Expenditures for Operations Above RLE	Percent of FY 2008 Actual Local Expenditures for Operations Above RLE
075	PRINCE WILLIAM	189,611,833	370,136,302	180,524,469	95.21%
077	PULASKI	8,383,210	11,065,166	2,681,956	31.99%
078	RAPPAHANNOCK	4,341,602	7,781,516	3,439,914	79.23%
079	RICHMOND	2,696,922	4,402,445	1,705,523	63.24%
080	ROANOKE	31,679,996	56,018,570	24,338,574	76.83%
081	ROCKBRIDGE	7,158,974	11,494,800	4,335,826	60.56%
082	ROCKINGHAM	20,647,440	40,392,601	19,745,161	95.63%
083	RUSSELL	5,629,188	6,345,035	715,847	12.72%
084	SCOTT	4,798,744	5,694,086	895,342	18.66%
085	SHENANDOAH	11,894,366	24,304,130	12,409,764	104.33%
086	SMYTH	6,752,052	8,675,230	1,923,178	28.48%
087	SOUTHAMPTON	4,378,409	7,564,298	3,185,889	72.76%
088	SPOTSYLVANIA	47,797,397	97,621,369	49,823,972	104.24%
089	STAFFORD	51,274,192	94,983,883	43,709,691	85.25%
090	SURRY	4,984,455	10,586,850	5,602,395	112.40%
091	SUSSEX	2,375,292	8,638,539	6,263,247	263.68%
092	TAZEWELL	9,624,191	10,692,529	1,068,338	11.10%
093	WARREN	12,083,237	16,985,264	4,902,027	40.57%
094	WASHINGTON	13,704,470	21,306,177	7,601,707	55.47%
095	WESTMORELAND	4,601,903	5,279,362	677,459	14.72%
096	WISE	7,619,197	11,835,846	4,216,649	55.34%
097	WYTHE	7,667,759	9,820,671	2,152,912	28.08%
098	YORK	26,694,917	50,700,528	24,005,611	89.93%
101	ALEXANDRIA	55,331,917	154,159,522	98,827,605	178.61%
102	BRISTOL	4,692,098	5,850,933	1,158,835	24.70%



# Actual FY 2008 Required Local Effort, continued

Div. Num.	Division Name	FY 2008 Required Local Effort <sup>1</sup>	FY 2008 Actual Local Expenditures for Operations <sup>2</sup>	FY 2008 Actual Local Expenditures for Operations Above RLE	Percent of FY 2008 Actual Local Expenditures for Operations Above RLE
103	BUENA VISTA	1,582,709	2,389,913	807,204	51.00%
104	CHARLOTTESVILLE	13,537,422	38,228,591	24,691,169	182.39%
106	COLONIAL HEIGHTS	7,525,822	17,961,136	10,435,314	138.66%
107	COVINGTON	1,703,604	3,514,919	1,811,315	106.32%
108	DANVILLE	9,718,584	17,607,131	7,888,547	81.17%
109	FALLS CHURCH	9,829,680	28,610,533	18,780,853	191.06%
110	FREDERICKSBURG	11,988,993	23,796,523	11,807,530	98.49%
111	GALAX	2,216,736	2,959,684	742,948	33.52%
112	HAMPTON	29,457,935	64,888,516	35,430,581	120.28%
113	HARRISONBURG	11,726,732	22,737,080	11,010,348	93.89%
114	HOPEWELL	5,834,877	10,325,944	4,491,067	76.97%
115	LYNCHBURG	16,466,165	33,795,991	17,329,826	105.25%
116	MARTINSVILLE	3,430,189	6,719,667	3,289,478	95.90%
117	NEWPORT NEWS	42,479,242	90,972,233	48,492,991	114.16%
118	NORFOLK	48,545,919	104,529,588	55,983,669	115.32%
119	NORTON	1,472,543	1,744,687	272,144	18.48%
120	PETERSBURG	6,295,239	8,227,707	1,932,468	30.70%
121	PORTSMOUTH	18,276,719	36,415,851	18,139,132	99.25%
122	RADFORD	2,593,108	7,114,829	4,521,721	174.37%
123	RICHMOND CITY	58,423,956	128,458,658	70,034,702	119.87%
124	ROANOKE CITY	29,091,362	46,448,577	17,357,215	59.66%
126	STAUNTON	5,501,679	10,790,199	5,288,520	96.13%
127	SUFFOLK	22,728,548	43,460,602	20,732,054	91.22%
128	VIRGINIA BEACH	136,273,374	339,311,275	203,037,901	148.99%
130	WAYNESBORO	5,208,473	10,518,372	5,309,899	101.95%



# Actual FY 2008 Required Local Effort, continued

Div. Num.	Division Name	FY 2008 Required Local Effort <sup>1</sup>	FY 2008 Actual Local Expenditures for Operations <sup>2</sup>	FY 2008 Actual Local Expenditures for Operations Above RLE	Percent of FY 2008 Actual Local Expenditures for Operations Above RLE
131	WILLIAMSBURG	3,558,463	4,516,003	957,540	26.91%
132	WINCHESTER	11,897,280	26,379,816	14,482,536	121.73%
134	FAIRFAX CITY	14,558,876	30,293,000	15,734,124	108.07%
135	FRANKLIN CITY	2,184,125	4,670,641	2,486,516	113.84%
136	CHESAPEAKE	69,707,532	176,199,771	106,492,239	152.77%
137	LEXINGTON	1,327,076	2,185,861	858,785	64.71%
138	EMPORIA	1,722,512	2,528,342	805,830	46.78%
139	SALEM	8,042,641	17,789,892	9,747,251	121.19%
140	BEDFORD CITY	1,436,543	2,113,223	676,680	47.10%
142	POQUOSON	4,320,805	7,918,767	3,597,962	83.27%
143	MANASSAS	16,433,015	47,660,295	31,227,280	190.03%
144	MANASSAS PARK	5,606,342	13,383,150	7,776,808	138.71%
202	COLONIAL BEACH	1,237,454	1,985,947	748,493	60.49%
207	WEST POINT	1,336,895	3,570,628	2,233,733	167.08%

<sup>1</sup> Required local effort for SOQ programs (Basic Aid; Gifted Education; Vocational Education; Special Education; Prevention, Intervention and Remediation; Fringe Benefits; English as a Second Language; and Textbooks) based on Chapter 847, 2008 Acts of Assembly, and final March 31, 2008, Average Daily Membership.

<sup>2</sup> Local expenditures for operations are based on expenditures as reported by school divisions on the 2007-2008 Annual School Report Financial Section.



# Actual FY 2008 Required Local Effort and Match - Combined

## Actual Required Local Effort and Match for SOQ, School Facilities, and Incentive Accounts - *Fiscal Year 2008*

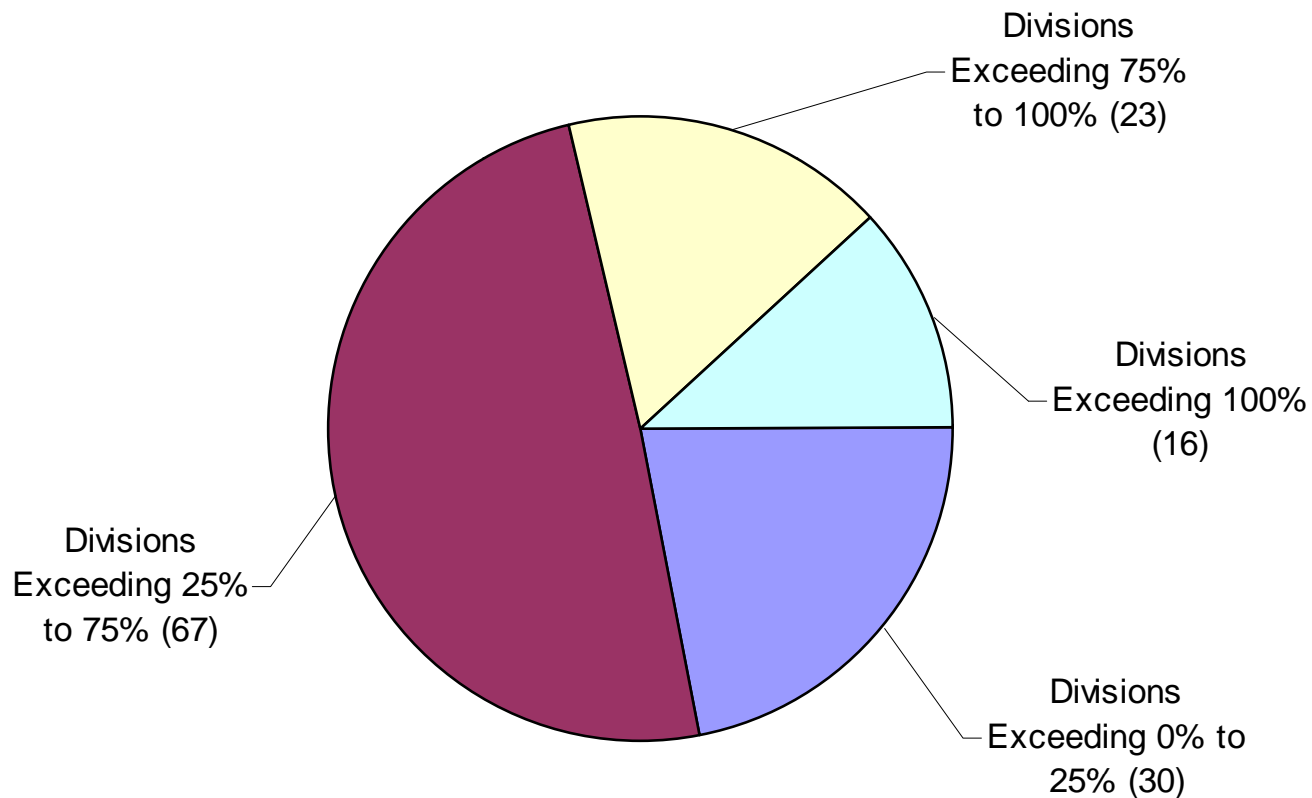
All reporting school divisions exceeded required local effort and match for fiscal year 2008. The range of local support in excess of the required amount is:

- Low – Pittsylvania – 0.002% in excess of the required amount
- High – Sussex – 203.49% in excess of the required amount
- The average local support in excess of the required level for FY 2008: 56.09%



# Actual FY 2008 Required Local Effort and Match, continued

Distribution - Total Actual Local Expenditures for Operations and Capital Above RLE and RLM



# Actual FY 2008 Required Local Effort and Match, continued

## FY 2008 TOTAL Local Match Requirement for SOQ, Incentive, and School Facilities Accounts Compared to Actual Local Expenditures for Operations and Capital

Div. Num.	Division Name	FY 2008 <u>TOTAL</u> Required Local Effort and Match <sup>1</sup>	FY 2008 <u>TOTAL</u> Actual Local Expenditures for Operations and Capital <sup>2, 3</sup>	FY 2008 <u>TOTAL</u> Actual Local Expenditures for Operations and Capital Above RLE and RLM	Percent of FY 2008 <u>TOTAL</u> Actual Local Expenditures for Operations and Capital Above RLE and RLM
001	ACCOMACK	12,244,971	14,848,108	2,603,137	21.26%
002	ALBEMARLE	49,851,118	101,958,203	52,107,085	104.53%
003	ALLEGHANY	4,985,662	9,851,720	4,866,058	97.60%
004	AMELIA	4,461,208	4,783,942	322,734	7.23%
005	AMHERST	9,038,859	13,182,099	4,143,240	45.84%
006	APPOMATTOX	4,146,498	4,300,994	154,496	3.73%
007	ARLINGTON	108,820,963	288,033,999	179,213,036	164.69%
008	AUGUSTA	23,092,766	32,134,459	9,041,693	39.15%
009	BATH	4,322,195	7,220,502	2,898,307	67.06%
010	BEDFORD	22,387,057	29,441,865	7,054,808	31.51%
011	BLAND	2,041,603	2,074,399	32,796	1.61%
012	BOTETOURT	12,965,728	19,098,513	6,132,785	47.30%
013	BRUNSWICK	4,245,398	4,683,759	438,361	10.33%
014	BUCHANAN	8,504,389	9,635,022	1,130,633	13.29%
015	BUCKINGHAM	3,971,070	5,363,773	1,392,703	35.07%
016	CAMPBELL	14,395,505	18,157,201	3,761,696	26.13%
017	CAROLINE	9,405,529	12,392,593	2,987,064	31.76%
018	CARROLL	7,806,103	10,036,414	2,230,311	28.57%
019	CHARLES CITY	2,891,549	4,960,827	2,069,278	71.56%
020	CHARLOTTE	3,428,254	3,533,026	104,772	3.06%
021	CHESTERFIELD	131,639,218	236,578,061	104,938,843	79.72%
022	CLARKE	7,960,811	10,826,560	2,865,749	36.00%



# Actual FY 2008 Required Local Effort and Match, continued

Div. Num.	Division Name	FY 2008 TOTAL Required Local Effort and Match <sup>1</sup>	FY 2008 TOTAL Actual Local Expenditures for Operations, VPI, and Capital <sup>2, 3</sup>	FY 2008 TOTAL Actual Local Expenditures for Operations, VPI, and Capital Above RLE and RLM	Percent of FY 2008 TOTAL Actual Local Expenditures for Operations, VPI, and Capital Above RLE and RLM
023	CRAIG	1,680,032	1,788,101	108,069	6.43%
024	CULPEPER	19,764,030	28,786,177	9,022,147	45.65%
025	CUMBERLAND	3,034,452	4,913,474	1,879,022	61.92%
026	DICKENSON	4,298,028	6,015,795	1,717,767	39.97%
027	DINWIDDIE	8,667,989	12,159,553	3,491,564	40.28%
028	ESSEX	4,681,937	6,126,584	1,444,647	30.86%
029	FAIRFAX	836,326,251	1,634,385,746	798,059,495	95.42%
030	FAUQUIER	46,636,836	77,343,339	30,706,503	65.84%
031	FLOYD	4,614,954	5,802,224	1,187,270	25.73%
032	FLUVANNA	8,726,029	14,260,059	5,534,030	63.42%
033	FRANKLIN	19,774,447	24,915,433	5,140,986	26.00%
034	FREDERICK	33,380,806	60,286,028	26,905,222	80.60%
035	GILES	4,798,742	6,191,500	1,392,758	29.02%
036	GLOUCESTER	12,559,279	22,437,803	9,878,524	78.66%
037	GOOCHLAND	12,509,961	18,671,059	6,161,098	49.25%
038	GRAYSON	4,308,032	5,077,939	769,907	17.87%
039	GREENE	6,339,786	10,421,343	4,081,557	64.38%
040	GREENSVILLE	2,689,178	3,441,439	752,261	27.97%
041	HALIFAX	10,304,041	14,596,582	4,292,541	41.66%
042	HANOVER	50,309,934	77,445,252	27,135,318	53.94%
043	HENRICO	145,439,717	181,815,808	36,376,091	25.01%
044	HENRY	12,990,622	13,883,715	893,093	6.87%
045	HIGHLAND	1,712,987	1,857,497	144,510	8.44%
046	ISLE OF WIGHT	13,009,456	23,768,195	10,758,739	82.70%
047	JAMES CITY	32,945,539	66,420,712	33,475,173	101.61%



# Actual FY 2008 Required Local Effort and Match, continued

Div. Num.	Division Name	FY 2008 TOTAL Required Local Effort and Match <sup>1</sup>	FY 2008 TOTAL Actual Local Expenditures for Operations and Capital <sup>2, 3</sup>	FY 2008 TOTAL Actual Local Expenditures for Operations and Capital Above RLE and RLM	Percent of FY 2008 TOTAL Actual Local Expenditures for Operations and Capital Above RLE and RLM
048	KING GEORGE	10,384,971	11,155,976	771,005	7.42%
049	KING QUEEN	2,744,052	4,943,361	2,199,309	80.15%
050	KING WILLIAM	4,857,498	6,701,610	1,844,112	37.96%
051	LANCASTER	6,374,579	9,281,963	2,907,384	45.61%
052	LEE	5,084,889	8,752,021	3,667,132	72.12%
053	LOUDOUN	247,335,348	528,309,182	280,973,834	113.60%
054	LOUISA	16,936,328	23,924,514	6,988,186	41.26%
055	LUNENBURG	2,976,834	3,188,999	212,165	7.13%
056	MADISON	5,720,588	7,326,207	1,605,619	28.07%
057	MATHEWS	4,262,364	5,642,331	1,379,967	32.38%
058	MECKLENBURG	10,592,042	10,945,387	353,345	3.34%
059	MIDDLESEX	5,268,644	6,840,052	1,571,408	29.83%
060	MONTGOMERY	24,055,490	36,896,250	12,840,760	53.38%
062	NELSON	7,127,607	10,366,125	3,238,518	45.44%
063	NEW KENT	7,111,655	10,426,490	3,314,835	46.61%
065	NORTHAMPTON	5,900,152	7,801,799	1,901,647	32.23%
066	NORTHUMBERLAND	6,884,320	8,797,189	1,912,869	27.79%
067	NOTTOWAY	4,105,617	4,198,052	92,435	2.25%
068	ORANGE	14,924,532	17,395,950	2,471,418	16.56%
069	PAGE	6,933,433	8,608,083	1,674,650	24.15%
070	PATRICK	4,796,132	5,217,812	421,680	8.79%
071	PITTSYLVANIA	15,858,657	15,859,029	372	0.00%
072	POWHATAN	10,461,733	19,358,714	8,896,981	85.04%
073	PRINCE EDWARD	5,280,863	7,518,456	2,237,593	42.37%
074	PRINCE GEORGE	9,448,444	13,644,493	4,196,049	44.41%





# Actual FY 2008 Required Local Effort and Match, continued

Div. Num.	Division Name	FY 2008 TOTAL Required Local Effort and Match <sup>1</sup>	FY 2008 TOTAL Actual Local Expenditures for Operations and Capital <sup>2, 3</sup>	FY 2008 TOTAL Actual Local Expenditures for Operations and Capital Above RLE and RLM	Percent of FY 2008 TOTAL Actual Local Expenditures for Operations and Capital Above RLE and RLM
075	PRINCE WILLIAM	210,593,719	354,983,400	144,389,681	68.56%
077	PULASKI	9,658,366	11,616,065	1,957,699	20.27%
078	RAPPAHANNOCK	4,816,788	8,016,797	3,200,009	66.43%
079	RICHMOND	3,112,116	4,547,081	1,434,965	46.11%
080	ROANOKE	35,213,168	57,489,625	22,276,457	63.26%
081	ROCKBRIDGE	8,202,229	11,928,340	3,726,111	45.43%
082	ROCKINGHAM	23,612,352	41,689,461	18,077,109	76.56%
083	RUSSELL	6,582,690	6,659,434	76,744	1.17%
084	SCOTT	5,502,613	5,893,661	391,048	7.11%
085	SHENANDOAH	13,525,149	24,828,486	11,303,337	83.57%
086	SMYTH	7,786,734	9,019,201	1,232,467	15.83%
087	SOUTHAMPTON	5,077,573	7,840,839	2,763,266	54.42%
088	SPOTSYLVANIA	53,182,910	99,850,322	46,667,412	87.75%
089	STAFFORD	56,617,930	97,179,707	40,561,777	71.64%
090	SURRY	5,839,134	11,085,280	5,246,146	89.84%
091	SUSSEX	2,885,052	8,755,834	5,870,782	203.49%
092	TAZEWELL	11,335,816	11,380,830	45,014	0.40%
093	WARREN	13,653,536	17,595,649	3,942,113	28.87%
094	WASHINGTON	15,816,876	22,078,225	6,261,349	39.59%
095	WESTMORELAND	5,375,391	5,521,652	146,261	2.72%
096	WISE	8,942,480	12,269,407	3,326,927	37.20%
097	WYTHE	8,851,973	10,378,261	1,526,288	17.24%
098	YORK	29,339,324	51,863,634	22,524,310	76.77%
101	ALEXANDRIA	64,436,459	158,498,294	94,061,835	145.98%
102	BRISTOL	5,495,183	6,100,543	605,360	11.02%



# Actual FY 2008 Required Local Effort and Match, continued

Div. Num.	Division Name	FY 2008 <u>TOTAL</u> Required Local Effort and Match <sup>1</sup>	FY 2008 <u>TOTAL</u> Actual Local Expenditures for Operations and Capital <sup>2, 3</sup>	FY 2008 <u>TOTAL</u> Actual Local Expenditures for Operations and Capital Above RLE and RLM	Percent of FY 2008 <u>TOTAL</u> Actual Local Expenditures for Operations and Capital Above RLE and RLM
103	BUENA VISTA	1,785,006	2,549,227	764,221	42.81%
104	CHARLOTTESVILLE	16,139,910	39,139,875	22,999,965	142.50%
106	COLONIAL HEIGHTS	8,393,917	18,455,673	10,061,756	119.87%
107	COVINGTON	2,009,711	3,828,862	1,819,151	90.52%
108	DANVILLE	11,872,759	18,186,235	6,313,476	53.18%
109	FALLS CHURCH	10,760,514	29,037,315	18,276,801	169.85%
110	FREDERICKSBURG	14,039,223	24,408,613	10,369,390	73.86%
111	GALAX	2,609,368	3,080,992	471,624	18.07%
112	HAMPTON	34,511,090	67,281,525	32,770,435	94.96%
113	HARRISONBURG	13,724,605	23,598,766	9,874,161	71.94%
114	HOPEWELL	7,047,310	10,744,938	3,697,628	52.47%
115	LYNCHBURG	20,068,948	34,988,100	14,919,152	74.34%
116	MARTINSVILLE	4,127,658	6,998,761	2,871,103	69.56%
117	NEWPORT NEWS	51,000,345	97,169,657	46,169,312	90.53%
118	NORFOLK	60,116,533	111,362,562	51,246,029	85.24%
119	NORTON	1,720,409	1,838,336	117,927	6.85%
120	PETERSBURG	7,849,859	8,699,801	849,942	10.83%
121	PORTSMOUTH	22,292,946	37,885,282	15,592,336	69.94%
122	RADFORD	2,962,078	7,413,163	4,451,085	150.27%
123	RICHMOND CITY	73,380,876	132,990,832	59,609,956	81.23%
124	ROANOKE CITY	35,538,420	47,805,680	12,267,260	34.52%
126	STAUNTON	6,528,577	11,359,637	4,831,060	74.00%
127	SUFFOLK	26,372,658	45,215,203	18,842,545	71.45%
128	VIRGINIA BEACH	153,802,177	346,600,115	192,797,938	125.35%
130	WAYNESBORO	6,141,819	11,282,688	5,140,869	83.70%



# Actual FY 2008 Required Local Effort and Match, continued

Div. Num.	Division Name	FY 2008 <u>TOTAL</u> Required Local Effort and Match <sup>1</sup>	FY 2008 <u>TOTAL</u> Actual Local Expenditures for Operations and Capital <sup>2, 3</sup>	FY 2008 <u>TOTAL</u> Actual Local Expenditures for Operations and Capital Above RLE and RLM	Percent of FY 2008 <u>TOTAL</u> Actual Local Expenditures for Operations and Capital Above RLE and RLM
131	WILLIAMSBURG	4,069,990	7,797,124	3,727,134	91.58%
132	WINCHESTER	13,812,587	27,179,676	13,367,089	96.77%
134	FAIRFAX CITY	16,214,144	30,877,344	14,663,200	90.43%
135	FRANKLIN CITY	2,734,244	5,013,878	2,279,634	83.37%
136	CHESAPEAKE	78,573,709	182,306,242	103,732,533	132.02%
137	LEXINGTON	1,531,093	2,282,870	751,777	49.10%
138	EMPORIA	2,060,487	2,620,720	560,233	27.19%
139	SALEM	8,993,629	18,176,025	9,182,396	102.10%
140	BEDFORD CITY	1,682,471	2,202,181	519,710	30.89%
142	POQUOSON	4,762,949	8,143,792	3,380,843	70.98%
143	MANASSAS	18,452,946	48,329,615	29,876,669	161.91%
144	MANASSAS PARK	6,417,559	14,008,294	7,590,735	118.28%
202	COLONIAL BEACH	1,429,974	2,060,762	630,788	44.11%
207	WEST POINT	1,485,322	3,655,588	2,170,266	146.11%

<sup>1</sup> Required Local Effort for SOQ Programs and Required local match programs (School Construction Grants, At-Risk, Virginia Preschool Initiative, Compensation Supplement, Early Reading Intervention, K-3 Primary Class Size Reduction, SOL Algebra Readiness, and Local Lottery Distribution) based on Chapter 847, 2008 Acts of Assembly, and actual March 31, 2008, Average Daily Membership.

<sup>2</sup> As reported by school divisions on the fiscal year 2008 Annual School Report Financial Section (ASRFIN) data collection. This figure includes actual local capital expenditures, actual local operational expenditures, and actual expenditures for the Virginia Preschool Initiative. Local capital expenditures can be used to meet local match requirements for School Construction Grants and Local Lottery Distribution. Local expenditures for operations can be used to meet local match requirements for School Facilities and Incentive accounts. Expenditures for the Virginia Preschool Initiative can only be used to meet the local match requirements for that program.

<sup>3</sup> The amount included for actual local capital expenditures only reflects the amount that a division is allowed to count towards the local match requirements for School Construction Grants and Local Lottery Distribution.



# Budgeted FY 2009 Required Local Effort

## Budgeted Required Local Effort for the Standards of Quality - *Fiscal Year 2009*

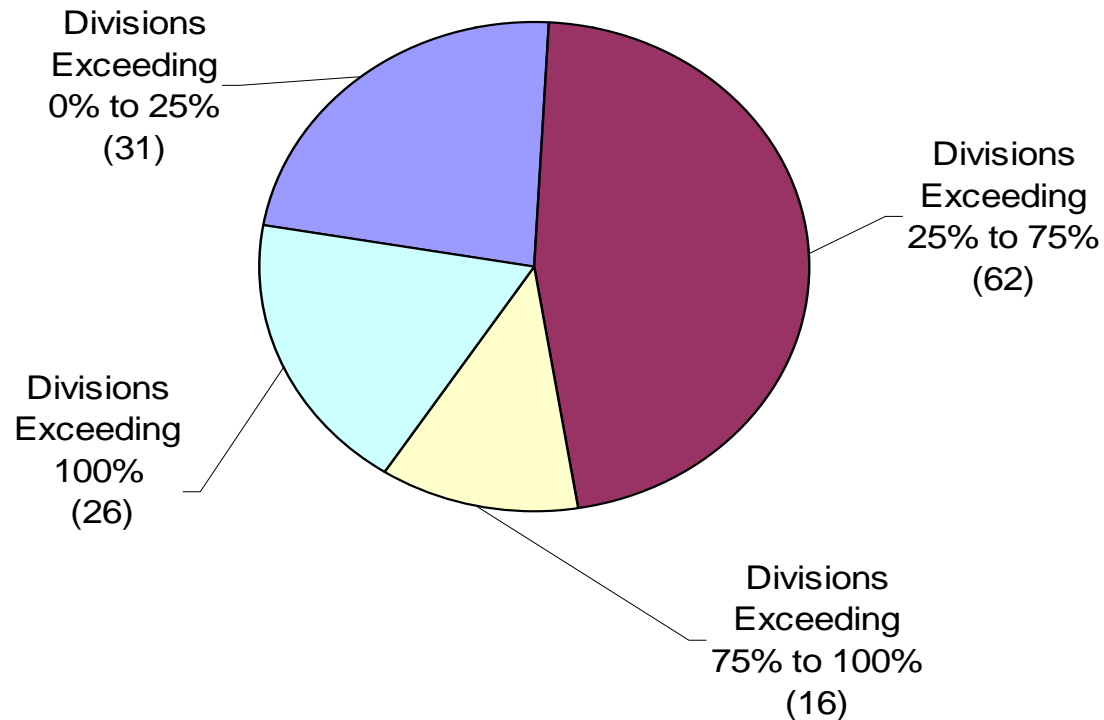
All reporting school divisions exceeded budgeted required local effort for fiscal year 2009. Nottoway County has not yet submitted its RLE/RLM data collection for fiscal year 2009. The range of budgeted local support in excess of the required amount is:

- Low – Westmoreland – 5.97%
- High – Alexandria – 203.82%
- The average budgeted local support in excess of the required level for FY 2009: 61.64%



# Budgeted FY 2009 Required Local Effort, continued

Distribution - Percent of FY09 Budgeted Local Expenditures for Operations Above Required Local Effort for SOQ



20



# Budgeted FY 2009 Required Local Effort, continued

FY 2009 Budgeted Required Local Effort (RLE) for the Standards of Quality RLE Based on Chapter 879, 2008 Acts of Assembly, and Projected March 31, 2009, Average Daily Membership (ADM)					
Div. Num.	Division Name	FY 2009 Budgeted Required Local Effort <sup>1</sup>	FY 2009 Budgeted Local Expenditures for Operations <sup>2</sup>	FY 2009 Budgeted Local Expenditures for Operations Above RLE	Percent of FY 2009 Budgeted Local Expenditures for Operations Above RLE
001	ACCOMACK	13,344,663	15,225,759	1,881,096	14.10%
002	ALBEMARLE	51,529,496	97,060,672	45,531,176	88.36%
003	ALLEGHANY	4,307,831	7,463,348	3,155,517	73.25%
004	AMELIA	4,008,249	4,948,811	940,562	23.47%
005	AMHERST	8,381,924	9,865,831	1,483,907	17.70%
006	APPOMATTOX	3,777,250	4,586,166	808,916	21.42%
007	ARLINGTON	108,063,246	281,249,384	173,186,138	160.26%
008	AUGUSTA	22,452,406	34,905,891	12,453,485	55.47%
009	BATH	4,352,505	6,735,846	2,383,341	54.76%
010	BEDFORD	21,301,136	27,539,729	6,238,593	29.29%
011	BLAND	1,733,546	2,233,211	499,665	28.82%
012	BOTETOURT	11,612,904	19,175,897	7,562,993	65.13%
013	BRUNSWICK	4,076,808	4,530,828	454,020	11.14%
014	BUCHANAN	6,967,681	9,672,694	2,705,013	38.82%
015	BUCKINGHAM	3,453,112	4,685,053	1,231,941	35.68%
016	CAMPBELL	12,645,661	20,349,534	7,703,873	60.92%
017	CAROLINE	10,234,096	11,909,841	1,675,745	16.37%
018	CARROLL	6,403,323	9,073,866	2,670,543	41.71%
019	CHARLES CITY	2,993,801	5,056,795	2,062,994	68.91%
020	CHARLOTTE	3,110,776	3,546,734	435,958	14.01%
021	CHESTERFIELD	130,264,223	220,441,782	90,177,559	69.23%
022	CLARKE	8,930,472	9,521,983	591,511	6.62%



# Budgeted FY 2009 Required Local Effort, continued

Div. Num.	Division Name	FY 2009 Budgeted Required Local Effort <sup>1</sup>	FY 2009 Budgeted Local Expenditures for Operations <sup>2</sup>	FY 2009 Budgeted Local Expenditures for Operations Above RLE	Percent of FY 2009 Budgeted Local Expenditures for Operations Above RLE
023	CRAIG	1,466,570	1,608,841	142,271	9.70%
024	CULPEPER	21,517,733	24,466,841	2,949,108	13.71%
025	CUMBERLAND	2,749,000	3,945,782	1,196,782	43.54%
026	DICKENSON	3,524,532	4,931,407	1,406,875	39.92%
027	DINWIDDIE	8,056,195	12,946,496	4,890,301	60.70%
028	ESSEX	4,671,483	6,329,537	1,658,054	35.49%
029	FAIRFAX	902,296,796	1,566,576,780	664,279,984	73.62%
030	FAUQUIER	49,518,355	85,469,873	35,951,518	72.60%
031	FLOYD	4,644,468	5,195,216	550,748	11.86%
032	FLUVANNA	9,456,019	15,136,038	5,680,019	60.07%
033	FRANKLIN	19,425,040	25,884,062	6,459,022	33.25%
034	FREDERICK	36,371,226	64,377,747	28,006,521	77.00%
035	GILES	4,517,355	5,901,315	1,383,960	30.64%
036	GLOUCESTER	13,193,036	22,058,846	8,865,810	67.20%
037	GOOCHLAND	13,678,035	18,484,957	4,806,922	35.14%
038	GRAYSON	4,057,631	4,644,860	587,229	14.47%
039	GREENE	6,420,335	7,239,038	818,703	12.75%
040	GREENSVILLE	2,061,853	2,517,145	455,292	22.08%
041	HALIFAX	9,716,524	14,224,495	4,507,971	46.39%
042	HANOVER	49,319,551	80,846,734	31,527,183	63.92%
043	HENRICO	140,490,946	183,054,915	42,563,969	30.30%
044	HENRY	10,855,733	16,086,135	5,230,402	48.18%
045	HIGHLAND	1,755,140	2,012,434	257,294	14.66%
046	ISLE OF WIGHT	12,778,636	24,116,759	11,338,123	88.73%
047	JAMES CITY	32,791,132	50,238,287	17,447,155	53.21%



# Budgeted FY 2009 Required Local Effort, continued

Div. Num.	Division Name	FY 2009 Budgeted Required Local Effort <sup>1</sup>	FY 2009 Budgeted Local Expenditures for Operations <sup>2</sup>	FY 2009 Budgeted Local Expenditures for Operations Above RLE	Percent of FY 2009 Budgeted Local Expenditures for Operations Above RLE
048	KING GEORGE	11,630,907	12,683,363	1,052,456	9.05%
049	KING QUEEN	2,487,107	3,530,849	1,043,742	41.97%
050	KING WILLIAM	4,339,055	6,328,089	1,989,034	45.84%
051	LANCASTER	6,631,059	10,498,390	3,867,331	58.32%
052	LEE	4,276,137	7,652,486	3,376,349	78.96%
053	LOUDOUN	264,266,003	548,765,431	284,499,428	107.66%
054	LOUISA	16,722,444	25,479,473	8,757,029	52.37%
055	LUNENBURG	2,400,840	3,452,889	1,052,049	43.82%
056	MADISON	6,455,074	7,225,709	770,635	11.94%
057	MATHEWS	4,726,942	7,042,227	2,315,285	48.98%
058	MECKLENBURG	9,500,494	10,787,517	1,287,023	13.55%
059	MIDDLESEX	5,867,788	6,748,943	881,155	15.02%
060	MONTGOMERY	22,362,834	35,394,007	13,031,173	58.27%
062	NELSON	7,810,332	9,029,518	1,219,186	15.61%
063	NEW KENT	7,524,483	10,523,961	2,999,478	39.86%
065	NORTHAMPTON	7,240,825	11,519,790	4,278,965	59.09%
066	NORTHUMBERLAND	6,988,918	9,617,653	2,628,735	37.61%
067	NOTTOWAY	<b>Data Not Submitted by Publication Deadline</b>			
068	ORANGE	15,737,618	17,858,099	2,120,481	13.47%
069	PAGE	7,849,240	9,088,868	1,239,628	15.79%
070	PATRICK	4,242,684	4,852,732	610,048	14.38%
071	PITTSYLVANIA	13,642,787	14,710,418	1,067,631	7.83%
072	POWHATAN	10,979,388	19,297,475	8,318,087	75.76%
073	PRINCE EDWARD	4,672,748	7,533,234	2,860,486	61.22%
074	PRINCE GEORGE	9,038,381	14,138,876	5,100,495	56.43%





# Budgeted FY 2009 Required Local Effort, continued

Div. Num.	Division Name	FY 2009 Budgeted Required Local Effort <sup>1</sup>	FY 2009 Budgeted Local Expenditures for Operations <sup>2</sup>	FY 2009 Budgeted Local Expenditures for Operations Above RLE	Percent of FY 2009 Budgeted Local Expenditures for Operations Above RLE
075	PRINCE WILLIAM	233,213,112	381,518,233	148,305,121	63.59%
077	PULASKI	8,445,969	11,727,537	3,281,568	38.85%
078	RAPPAHANNOCK	4,840,533	8,057,031	3,216,498	66.45%
079	RICHMOND	2,875,696	4,701,124	1,825,428	63.48%
080	ROANOKE	31,717,785	59,591,752	27,873,967	87.88%
081	ROCKBRIDGE	8,133,580	11,373,602	3,240,022	39.84%
082	ROCKINGHAM	22,761,274	46,382,021	23,620,747	103.78%
083	RUSSELL	5,950,175	6,878,028	927,853	15.59%
084	SCOTT	5,037,153	6,252,294	1,215,141	24.12%
085	SHENANDOAH	16,354,482	24,610,488	8,256,006	50.48%
086	SMYTH	6,857,169	9,345,774	2,488,605	36.29%
087	SOUTHAMPTON	4,945,654	8,098,604	3,152,950	63.75%
088	SPOTSYLVANIA	59,479,412	92,985,753	33,506,341	56.33%
089	STAFFORD	60,665,514	103,189,885	42,524,371	70.10%
090	SURRY	4,601,669	10,942,977	6,341,308	137.80%
091	SUSSEX	2,724,269	7,677,849	4,953,580	181.83%
092	TAZEWELL	10,140,616	10,909,837	769,221	7.59%
093	WARREN	14,604,100	18,283,241	3,679,141	25.19%
094	WASHINGTON	15,671,796	23,130,914	7,459,118	47.60%
095	WESTMORELAND	6,761,429	7,164,793	403,364	5.97%
096	WISE	7,600,761	16,452,981	8,852,220	116.46%
097	WYTHE	8,355,461	9,988,686	1,633,225	19.55%
098	YORK	29,342,359	54,362,765	25,020,406	85.27%
101	ALEXANDRIA	62,738,307	190,614,246	127,875,939	203.82%
102	BRISTOL	5,631,550	8,067,471	2,435,921	43.25%



# Budgeted FY 2009 Required Local Effort, continued

Div. Num.	Division Name	FY 2009 Budgeted Required Local Effort <sup>1</sup>	FY 2009 Budgeted Local Expenditures for Operations <sup>2</sup>	FY 2009 Budgeted Local Expenditures for Operations Above RLE	Percent of FY 2009 Budgeted Local Expenditures for Operations Above RLE
103	BUENA VISTA	1,516,375	2,633,993	1,117,618	73.70%
104	CHARLOTTESVILLE	15,418,168	41,402,606	25,984,438	168.53%
106	COLONIAL HEIGHTS	8,138,896	18,470,146	10,331,250	126.94%
107	COVINGTON	1,905,218	4,071,552	2,166,334	113.71%
108	DANVILLE	10,366,747	18,958,173	8,591,426	82.87%
109	FALLS CHURCH	11,510,308	30,125,279	18,614,971	161.72%
110	FREDERICKSBURG	14,967,959	25,649,296	10,681,337	71.36%
111	GALAX	2,214,871	2,785,693	570,822	25.77%
112	HAMPTON	32,135,600	69,339,386	37,203,786	115.77%
113	HARRISONBURG	12,144,856	26,598,351	14,453,495	119.01%
114	HOPEWELL	5,936,966	11,992,347	6,055,381	101.99%
115	LYNCHBURG	17,526,619	32,624,467	15,097,848	86.14%
116	MARTINSVILLE	3,425,230	6,507,945	3,082,715	90.00%
117	NEWPORT NEWS	46,102,189	88,755,734	42,653,545	92.52%
118	NORFOLK	51,961,862	108,511,298	56,549,436	108.83%
119	NORTON	1,498,283	2,148,390	650,107	43.39%
120	PETERSBURG	6,110,542	11,884,223	5,773,681	94.49%
121	PORTSMOUTH	19,978,479	57,104,804	37,126,325	185.83%
122	RADFORD	2,814,446	4,456,919	1,642,473	58.36%
123	RICHMOND CITY	64,342,965	149,956,320	85,613,355	133.06%
124	ROANOKE CITY	26,955,076	33,651,623	6,696,547	24.84%
126	STAUNTON	6,148,020	10,963,407	4,815,387	78.32%
127	SUFFOLK	26,287,495	46,473,673	20,186,178	76.79%
128	VIRGINIA BEACH	161,354,872	336,356,048	175,001,176	108.46%
130	WAYNESBORO	6,048,337	8,805,357	2,757,020	45.58%



# Budgeted FY 2009 Required Local Effort, continued

Div. Num.	Division Name	FY 2009 Budgeted Required Local Effort <sup>1</sup>	FY 2009 Budgeted Local Expenditures for Operations <sup>2</sup>	FY 2009 Budgeted Local Expenditures for Operations Above RLE	Percent of FY 2009 Budgeted Local Expenditures for Operations Above RLE
131	WILLIAMSBURG	3,860,851	7,550,556	3,689,705	95.57%
132	WINCHESTER	12,991,465	29,855,960	16,864,495	129.81%
134	FAIRFAX CITY	16,871,621	34,529,188	17,657,567	104.66%
135	FRANKLIN CITY	2,365,134	4,946,384	2,581,250	109.14%
136	CHESAPEAKE	75,331,453	189,665,630	114,334,177	151.77%
137	LEXINGTON	1,612,961	2,510,389	897,428	55.64%
138	EMPORIA	1,693,639	2,172,702	479,063	28.29%
139	SALEM	8,243,274	18,881,903	10,638,629	129.06%
140	BEDFORD CITY	1,570,071	2,201,594	631,523	40.22%
142	POQUOSON	4,649,250	5,956,267	1,307,017	28.11%
143	MANASSAS	19,856,416	48,190,361	28,333,945	142.69%
144	MANASSAS PARK	6,889,587	13,229,218	6,339,631	92.02%
202	COLONIAL BEACH	1,882,182	2,109,184	227,002	12.06%
207	WEST POINT	1,304,770	2,899,905	1,595,135	122.25%

<sup>1</sup> Required local effort for SOQ programs (Basic Aid; Gifted Education; Vocational Education; Special Education; Prevention, Intervention and Remediation; Fringe Benefits; English as a Second Language; and Textbooks) based on Chapter 879, 2008 Acts of Assembly, and projected March 31, 2009, Average Daily Membership.

<sup>2</sup> As reported by school divisions on the fiscal year 2009 Budgeted Required Local Effort data collection.



# Budgeted FY 2009 Required Local Effort and Match - Combined

## Budgeted Required Local Effort and Match for SOQ, School Facilities, and Lottery Accounts - *Fiscal Year 2009*

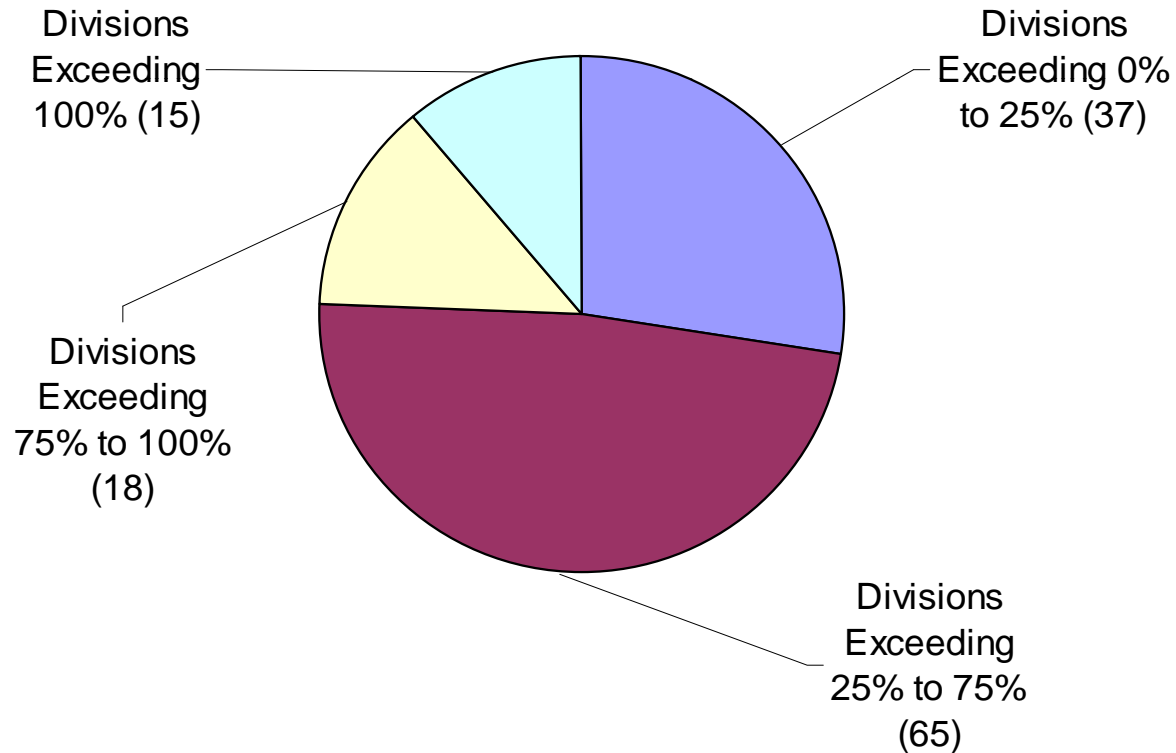
All reporting school divisions exceeded budgeted required local effort and match for fiscal year 2009. Nottoway County has not yet reported its RLE/RLM data for FY 2009. The funds used to meet required local match are budgeted local operational expenditures that are above those used to meet required local effort on the Standards of Quality, as well as budgeted local capital expenditures. The range of budgeted local support in excess of the required local effort and match amount is:

- Low – Brunswick – 0.46%
- High – Alexandria – 171.48%
- The average budgeted local support in excess of the required level for fiscal year 2009: 51.43%



# Budgeted FY 2009 Required Local Effort and Match, continued

Distribution - Total Actual Local Expenditures for Operations and Capital Above RLE and RLM



# Budgeted FY 2009 Required Local Effort and Match, continued

**FY 2009 TOTAL Local Match Requirement for SOQ, School Facilities, and Lottery Accounts Compared to Budgeted Local Expenditures for Operations and Capital**

Div. Num.	Division Name	FY 2009 <u>TOTAL</u> Required Local Effort and Match <sup>1</sup>	FY 2009 <u>TOTAL</u> Budgeted Local Expenditures for Operations and Capital <sup>2, 3</sup>	FY 2009 <u>TOTAL</u> Budgeted Local Expenditures for Operations and Capital Above RLE and RLM	Percent of FY 2009 <u>TOTAL</u> Budgeted Local Expenditures for Operations and Capital Above RLE and RLM
001	ACCOMACK	15,469,452	15,917,041	447,589	2.89%
002	ALBEMARLE	54,900,320	99,537,089	44,636,769	81.31%
003	ALLEGHANY	4,755,157	7,692,553	2,937,396	61.77%
004	AMELIA	4,404,618	5,288,161	883,543	20.06%
005	AMHERST	9,123,885	10,266,728	1,142,843	12.53%
006	APPOMATTOX	4,164,467	4,968,573	804,106	19.31%
007	ARLINGTON	117,436,753	287,340,471	169,903,718	144.68%
008	AUGUSTA	24,463,832	36,088,850	11,625,018	47.52%
009	BATH	4,651,054	6,793,389	2,142,335	46.06%
010	BEDFORD	22,866,497	28,776,871	5,910,374	25.85%
011	BLAND	1,870,932	2,323,741	452,809	24.20%
012	BOTETOURT	12,260,919	19,738,881	7,477,962	60.99%
013	BRUNSWICK	4,767,772	4,789,941	22,169	0.46%
014	BUCHANAN	7,851,115	9,730,747	1,879,632	23.94%
015	BUCKINGHAM	3,885,781	4,891,499	1,005,718	25.88%
016	CAMPBELL	13,907,231	21,173,246	7,266,015	52.25%
017	CAROLINE	11,274,542	12,331,978	1,057,436	9.38%
018	CARROLL	7,155,495	9,455,508	2,300,013	32.14%
019	CHARLES CITY	3,302,662	5,224,378	1,921,716	58.19%
020	CHARLOTTE	3,433,117	3,721,193	288,076	8.39%
021	CHESTERFIELD	139,215,766	225,872,755	86,656,989	62.25%
022	CLARKE	9,379,582	9,996,390	616,808	6.58%



# FY 2009 Required Local Effort and Match, continued

Div. Num.	Division Name	FY 2009 <u>TOTAL</u> Required Local Effort and Match <sup>1</sup>	FY 2009 <u>TOTAL</u> Budgeted Local Expenditures for Operations and Capital <sup>2, 3</sup>	FY 2009 <u>TOTAL</u> Budgeted Local Expenditures for Operations and Capital Above RLE and RLM	Percent of FY 2009 <u>TOTAL</u> Budgeted Local Expenditures for Operations and Capital Above RLE and RLM
023	CRAIG	1,595,040	1,608,841	13,801	0.87%
024	CULPEPER	23,113,021	25,235,177	2,122,156	9.18%
025	CUMBERLAND	3,129,082	4,140,628	1,011,546	32.33%
026	DICKENSON	3,876,750	5,085,134	1,208,384	31.17%
027	DINWIDDIE	8,847,188	13,350,299	4,503,111	50.90%
028	ESSEX	5,285,125	6,549,429	1,264,304	23.92%
029	FAIRFAX	954,339,138	1,631,679,655	677,340,517	70.97%
030	FAUQUIER	52,071,511	87,447,851	35,376,340	67.94%
031	FLOYD	5,079,255	5,459,263	380,008	7.48%
032	FLUVANNA	10,157,571	15,523,180	5,365,609	52.82%
033	FRANKLIN	21,397,612	26,950,997	5,553,385	25.95%
034	FREDERICK	38,902,111	65,759,499	26,857,388	69.04%
035	GILES	4,880,651	6,092,039	1,211,388	24.82%
036	GLOUCESTER	14,078,141	22,635,820	8,557,679	60.79%
037	GOOCHLAND	14,646,558	19,115,012	4,468,454	30.51%
038	GRAYSON	4,415,214	4,831,928	416,714	9.44%
039	GREENE	6,926,155	7,587,862	661,707	9.55%
040	GREENSVILLE	2,389,168	2,655,676	266,508	11.15%
041	HALIFAX	10,912,579	14,781,929	3,869,350	35.46%
042	HANOVER	51,878,905	82,954,564	31,075,659	59.90%
043	HENRICO	152,263,189	190,433,551	38,170,362	25.07%
044	HENRY	12,378,886	16,882,757	4,503,871	36.38%
045	HIGHLAND	1,905,655	2,119,961	214,306	11.25%
046	ISLE OF WIGHT	13,979,663	24,869,671	10,890,008	77.90%
047	JAMES CITY	35,087,433	54,784,679	19,697,246	56.14%



# FY 2009 Required Local Effort and Match, continued

Div. Num.	Division Name	FY 2009 TOTAL Required Local Effort and Match <sup>1</sup>	FY 2009 TOTAL Budgeted Local Expenditures for Operations and Capital <sup>2, 3</sup>	FY 2009 TOTAL Budgeted Local Expenditures for Operations and Capital Above RLE and RLM	Percent of FY 2009 TOTAL Budgeted Local Expenditures for Operations and Capital Above RLE and RLM
048	KING GEORGE	12,288,144	13,141,164	853,020	6.94%
049	KING QUEEN	2,853,815	3,712,778	858,963	30.10%
050	KING WILLIAM	4,655,184	6,684,099	2,028,915	43.58%
051	LANCASTER	7,654,716	10,999,562	3,344,846	43.70%
052	LEE	4,736,120	7,802,237	3,066,117	64.74%
053	LOUDOUN	277,490,369	559,622,232	282,131,863	101.67%
054	LOUISA	18,594,997	25,558,652	6,963,655	37.45%
055	LUNENBURG	2,722,476	3,608,074	885,598	32.53%
056	MADISON	6,872,190	7,284,041	411,851	5.99%
057	MATHEWS	5,081,052	7,260,930	2,179,878	42.90%
058	MECKLENBURG	10,679,539	11,092,517	412,978	3.87%
059	MIDDLESEX	6,373,058	7,021,878	648,820	10.18%
060	MONTGOMERY	24,594,997	36,677,262	12,082,265	49.12%
062	NELSON	8,635,102	9,232,845	597,743	6.92%
063	NEW KENT	7,889,960	10,523,961	2,634,001	33.38%
065	NORTHAMPTON	8,388,190	11,870,456	3,482,266	41.51%
066	NORTHUMBERLAND	7,861,544	9,972,102	2,110,558	26.85%
067	NOTTOWAY	<b>Data Not Submitted by Publication Deadline</b>			
068	ORANGE	16,918,355	18,213,427	1,295,072	7.65%
069	PAGE	8,659,920	9,563,311	903,391	10.43%
070	PATRICK	4,656,190	5,146,218	490,028	10.52%
071	PITTSYLVANIA	15,131,315	15,418,945	287,630	1.90%
072	POWHATAN	11,508,539	19,576,877	8,068,338	70.11%
073	PRINCE EDWARD	5,448,253	7,533,234	2,084,981	38.27%
074	PRINCE GEORGE	9,816,689	14,667,134	4,850,445	49.41%





# FY 2009 Required Local Effort and Match, continued

Div. Num.	Division Name	FY 2009 <u>TOTAL</u> Required Local Effort and Match <sup>1</sup>	FY 2009 <u>TOTAL</u> Budgeted Local Expenditures for Operations and Capital <sup>2, 3</sup>	FY 2009 <u>TOTAL</u> Budgeted Local Expenditures for Operations and Capital Above RLE and RLM	Percent of FY 2009 <u>TOTAL</u> Budgeted Local Expenditures for Operations and Capital Above RLE and RLM
075	PRINCE WILLIAM	250,642,298	389,824,162	139,181,864	55.53%
077	PULASKI	9,330,580	12,195,236	2,864,656	30.70%
078	RAPPAHANNOCK	5,187,778	8,312,056	3,124,278	60.22%
079	RICHMOND	3,171,460	4,707,409	1,535,949	48.43%
080	ROANOKE	33,613,400	61,071,177	27,457,777	81.69%
081	ROCKBRIDGE	8,815,265	11,840,827	3,025,562	34.32%
082	ROCKINGHAM	24,928,752	47,837,593	22,908,841	91.90%
083	RUSSELL	6,700,189	7,232,573	532,384	7.95%
084	SCOTT	5,505,268	6,449,686	944,418	17.15%
085	SHENANDOAH	17,761,624	25,274,939	7,513,315	42.30%
086	SMYTH	7,597,403	9,799,459	2,202,056	28.98%
087	SOUTHAMPTON	5,424,115	8,377,258	2,953,143	54.44%
088	SPOTSYLVANIA	63,326,703	95,494,611	32,167,908	50.80%
089	STAFFORD	63,940,437	105,732,754	41,792,317	65.36%
090	SURRY	5,326,927	11,231,131	5,904,204	110.84%
091	SUSSEX	3,135,791	7,795,083	4,659,292	148.58%
092	TAZEWELL	11,321,689	11,591,005	269,316	2.38%
093	WARREN	15,769,956	18,890,874	3,120,918	19.79%
094	WASHINGTON	17,165,063	23,962,482	6,797,419	39.60%
095	WESTMORELAND	7,366,574	7,436,961	70,387	0.96%
096	WISE	8,551,979	16,868,456	8,316,477	97.25%
097	WYTHE	9,128,117	10,568,492	1,440,375	15.78%
098	YORK	30,860,999	55,634,255	24,773,256	80.27%
101	ALEXANDRIA	71,919,341	195,245,818	123,326,477	171.48%
102	BRISTOL	6,401,346	8,346,619	1,945,273	30.39%



# FY 2009 Required Local Effort and Match, continued

Div. Num.	Division Name	FY 2009 <u>TOTAL</u> Required Local Effort and Match <sup>1</sup>	FY 2009 <u>TOTAL</u> Budgeted Local Expenditures for Operations and Capital <sup>2, 3</sup>	FY 2009 <u>TOTAL</u> Budgeted Local Expenditures for Operations and Capital Above RLE and RLM	Percent of FY 2009 <u>TOTAL</u> Budgeted Local Expenditures for Operations and Capital Above RLE and RLM
103	BUENA VISTA	1,644,705	2,638,493	993,788	60.42%
104	CHARLOTTESVILLE	17,857,539	42,363,626	24,506,087	137.23%
106	COLONIAL HEIGHTS	8,749,035	18,988,273	10,239,238	117.03%
107	COVINGTON	2,163,335	4,166,552	2,003,217	92.60%
108	DANVILLE	12,405,853	19,644,716	7,238,863	58.35%
109	FALLS CHURCH	12,047,479	30,809,055	18,761,576	155.73%
110	FREDERICKSBURG	16,769,475	25,845,655	9,076,180	54.12%
111	GALAX	2,554,309	2,926,519	372,210	14.57%
112	HAMPTON	35,867,252	72,906,280	37,039,028	103.27%
113	HARRISONBURG	13,960,776	26,938,890	12,978,114	92.96%
114	HOPEWELL	6,857,053	12,373,891	5,516,838	80.45%
115	LYNCHBURG	20,103,196	35,333,927	15,230,731	75.76%
116	MARTINSVILLE	3,982,219	6,744,716	2,762,497	69.37%
117	NEWPORT NEWS	52,780,748	92,434,974	39,654,226	75.13%
118	NORFOLK	61,365,491	116,034,616	54,669,125	89.09%
119	NORTON	1,680,003	2,239,595	559,592	33.31%
120	PETERSBURG	7,161,212	12,414,789	5,253,577	73.36%
121	PORTSMOUTH	23,056,692	58,654,236	35,597,544	154.39%
122	RADFORD	3,083,188	4,593,177	1,509,989	48.97%
123	RICHMOND CITY	79,635,826	155,270,023	75,634,197	94.98%
124	ROANOKE CITY	31,762,063	40,166,137	8,404,074	26.46%
126	STAUNTON	6,943,043	11,681,286	4,738,243	68.24%
127	SUFFOLK	29,199,591	48,394,920	19,195,329	65.74%
128	VIRGINIA BEACH	174,727,589	342,820,776	168,093,187	96.20%
130	WAYNESBORO	6,893,844	9,204,739	2,310,895	33.52%



# FY 2009 Required Local Effort and Match, continued

Div. Num.	Division Name	FY 2009 TOTAL Required Local Effort and Match <sup>1</sup>	FY 2009 TOTAL Budgeted Local Expenditures for Operations and Capital <sup>2, 3</sup>	FY 2009 TOTAL Budgeted Local Expenditures for Operations and Capital Above RLE and RLM	Percent of FY 2009 TOTAL Budgeted Local Expenditures for Operations and Capital Above RLE and RLM
131	WILLIAMSBURG	4,212,348	8,075,717	3,863,369	91.72%
132	WINCHESTER	14,558,962	30,690,864	16,131,902	110.80%
134	FAIRFAX CITY	17,980,405	35,161,548	17,181,143	95.55%
135	FRANKLIN CITY	2,750,332	5,184,876	2,434,544	88.52%
136	CHESAPEAKE	80,972,238	196,527,047	115,554,809	142.71%
137	LEXINGTON	1,765,179	2,614,084	848,905	48.09%
138	EMPORIA	1,983,435	2,298,632	315,197	15.89%
139	SALEM	8,828,865	19,256,593	10,427,728	118.11%
140	BEDFORD CITY	1,747,085	2,291,690	544,605	31.17%
142	POQUOSON	4,894,995	6,170,321	1,275,326	26.05%
143	MANASSAS	21,495,600	49,117,878	27,622,278	128.50%
144	MANASSAS PARK	7,626,142	13,911,791	6,285,649	82.42%
202	COLONIAL BEACH	2,046,331	2,109,184	62,853	3.07%
207	WEST POINT	1,388,258	2,974,986	1,586,728	114.30%

<sup>1</sup> Required local effort for SOQ programs (Basic Aid, Gifted Education; Vocational Education; Special Education; Prevention, Intervention, and Remediation; Fringe Benefits; English as a Second Language; and Textbooks) based on Chapter 879, 2008 Acts of Assembly, and projected March 31, 2009, Average Daily Membership. Required local match for School Facilities programs (School Construction) and for Lottery programs (At-Risk, Virginia Preschool Initiative (VPI), Early Reading Intervention, K-3 Primary Class Size Reduction Program, SOL Algebra Readiness and Additional Support for School Construction and Operating Costs) based on Chapter 879, 2008 Acts of Assembly, projected March 31, 2009, Average Daily Membership, Virginia Preschool Initiative Application Data, and Early Reading Intervention participation data.

<sup>2</sup> As reported by school divisions on the fiscal year 2009 Budgeted Required Local Match data collection. This figure includes budgeted local capital expenditures, budgeted local operational expenditures, and budgeted expenditures for the Virginia Preschool Initiative. Budgeted local capital can be used to meet local match requirements for School Construction Grants and Additional Support for School Construction & Operating Costs. Budgeted local expenditures for operations can be used to meet local match requirements for School Facilities, and Lottery accounts. Budgeted expenditures for the Virginia Preschool Initiative can only be used to meet the local match requirements for that program.

<sup>3</sup> The amount included for budgeted local capital expenditures only reflects the amount that a division is allowed to count towards the local match requirements for School Construction Grants and Additional Support for School Construction & Operating Costs.



# FY 2009 Required Local Match

## School Division Participation in Programs with Local Match Requirements - *Fiscal Year 2009*

- Pursuant to Item 140, Paragraph B.10, Chapter 879, 2008 Acts of Assembly for fiscal year 2009, the Department of Education collected data on budgeted required local match for School Facilities and Lottery accounts.
- As part of this data collection, school divisions also certified participation in the School Facilities and Lottery accounts. As of the date of this report, all school divisions except Nottoway County have submitted complete reports and have certified their participation status for fiscal year 2009.



# FY 2009 Required Local Match

- School divisions opted in or opted out of participating in these optional programs that have a required local match. If sufficient local operating or local capital expenditures were not available to meet local match requirements, then local school divisions must request additional local appropriation from the governing body prior to receiving state funds in fiscal year 2009.
- The information on the following slide details by account school division participation in School Facilities and Lottery accounts in fiscal year 2009.



# FY 2009 Required Local Match

- The following information details, by account, school division participation in School Facilities and Lottery accounts in fiscal year 2009 (135 of 136 divisions reporting):

	Number of Divisions Opting In	Number of Divisions That Must Request Additional Local Appropriation	Number of Divisions Not Eligible for Funding	Number of Divisions Opting Out
<b>Additional Support for School Construction &amp; Operating Cost</b>	135	0	0	0
<b>School Construction</b>	134	0	0	1
<b>At Risk</b>	135	0	0	0
<b>Virginia Preschool Initiative (VPI)</b>	113	0	12	10
<b>Early Reading Intervention</b>	135	0	0	0
<b>K-3 Primary Class Size Reduction</b>	127	0	6	2
<b>SOL Algebra Readiness</b>	131	0	0	4

