



**THE PORT OF
VIRGINIA**

House Appropriations Committee

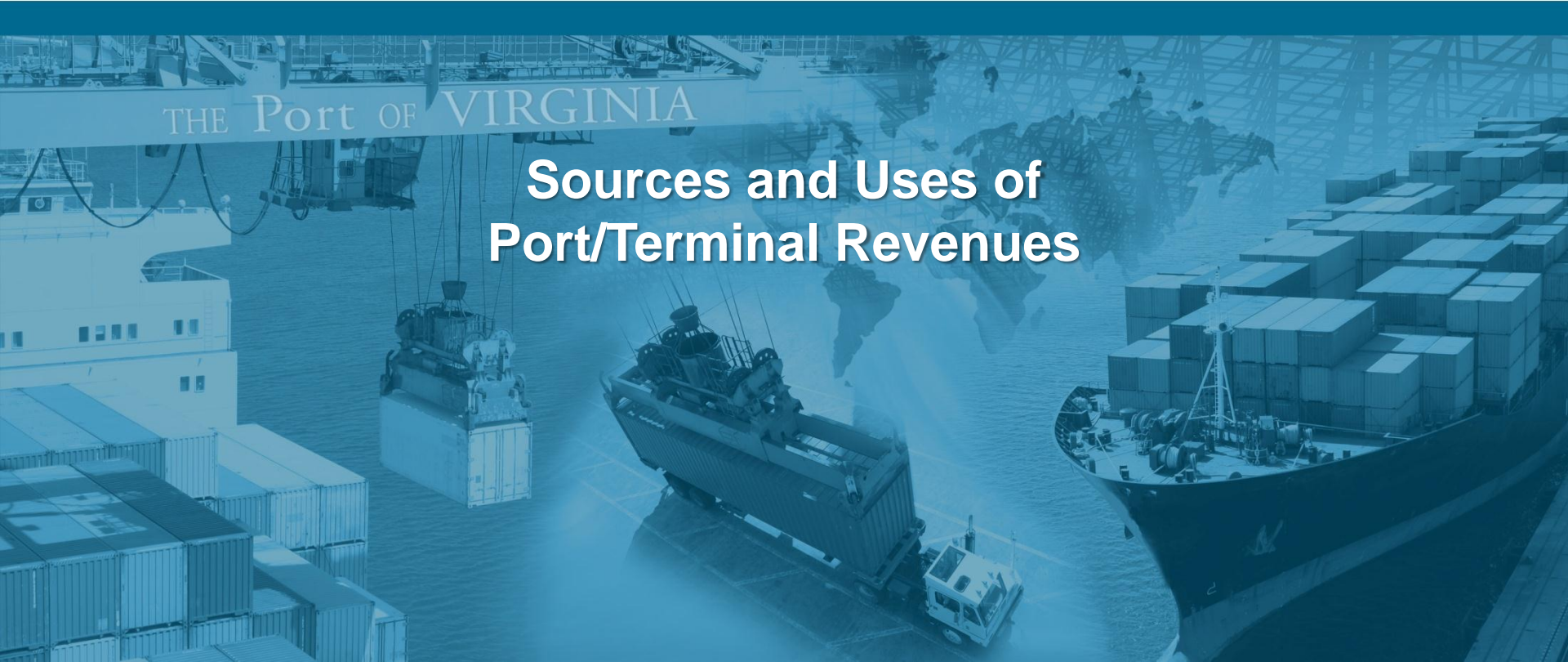
Senate Finance Committee

Presentation – PPTA proposals

October 15, 2012

THE Port OF VIRGINIA

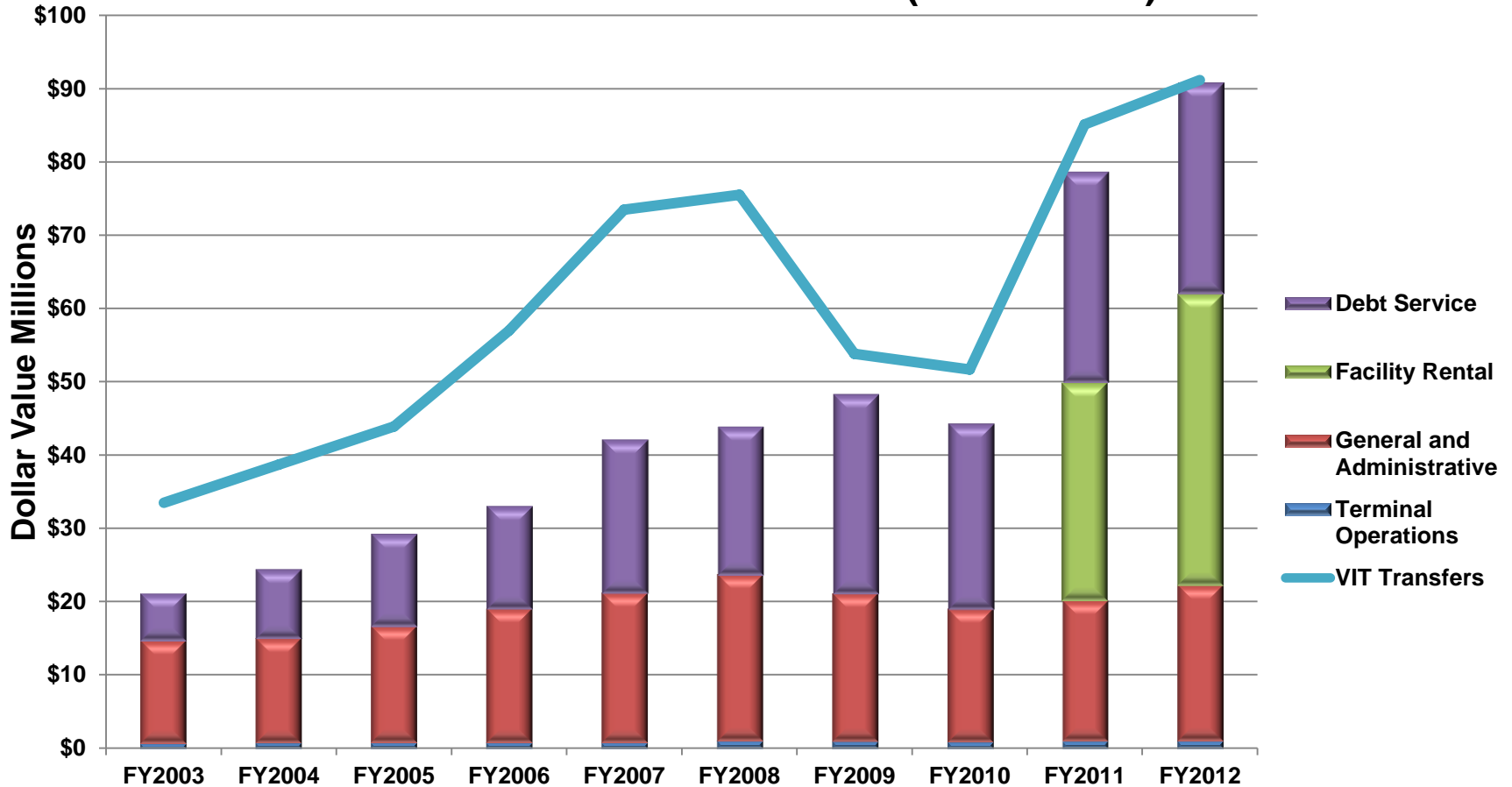
**Sources and Uses of
Port/Terminal Revenues**



- VIT Gross Receipts *(Primarily from Customers)*
- Less VIT current expenses for:
 - Terminal Operations
 - Terminal Maintenance
 - General/Administrative
- Less VIT small capital purchases and required reserves
- Equals amount transferred to VPA

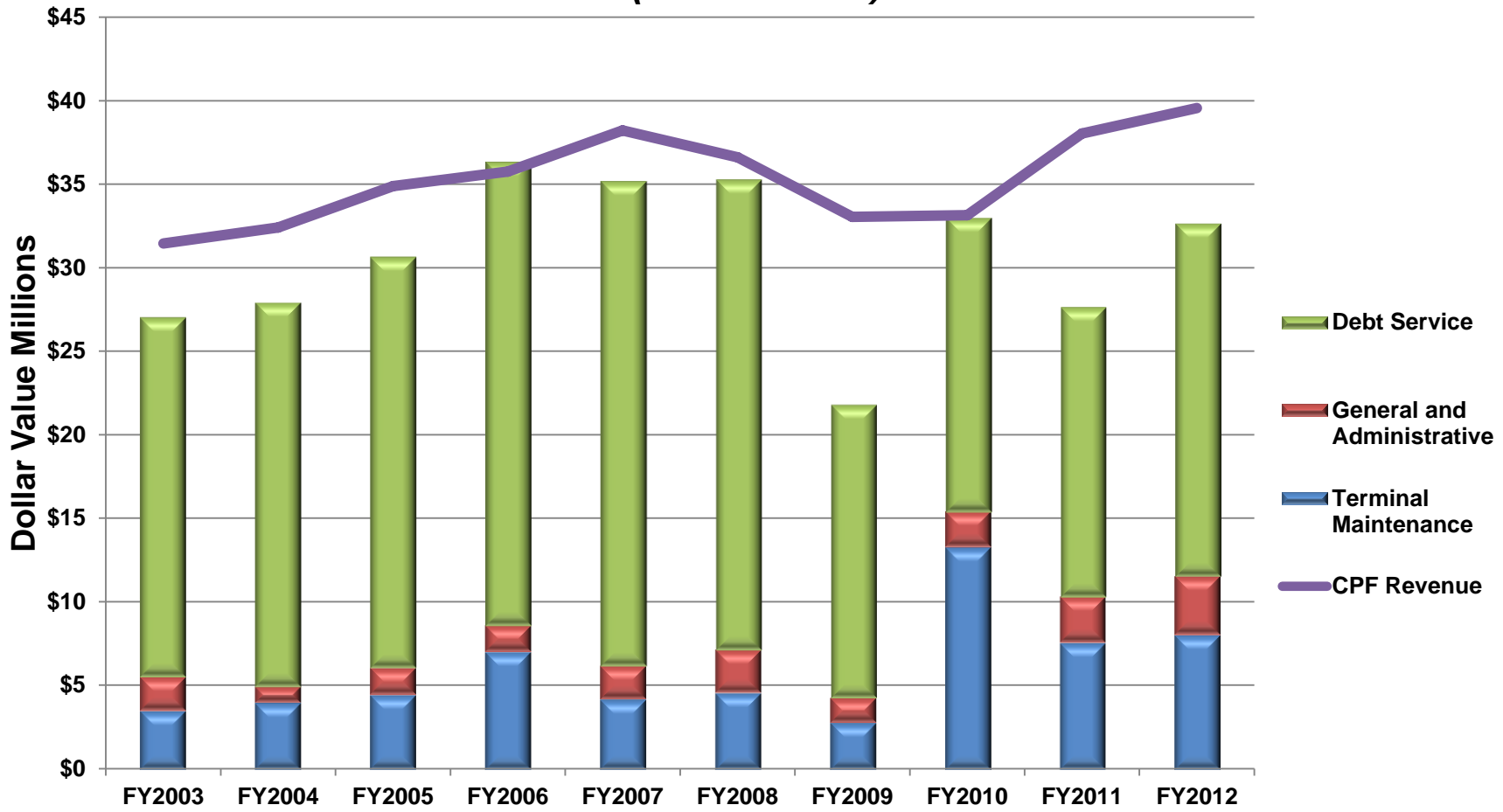
- Uses of Terminal Revenues at VPA:
 - Terminal Operations
 - General and Administrative including:
 - Security Services
 - Economic Development and External Affairs
 - Finance, Contracts and Human Resources
 - Facility Rental
 - Debt Service
 - Capital Projects

VIRGINIA PORT AUTHORITY Uses of Transfers from VIT (Cash Basis)



**Does not include expenditures for capital projects*

VIRGINIA PORT AUTHORITY (Cash Basis)



**Does not include expenditures for capital projects*