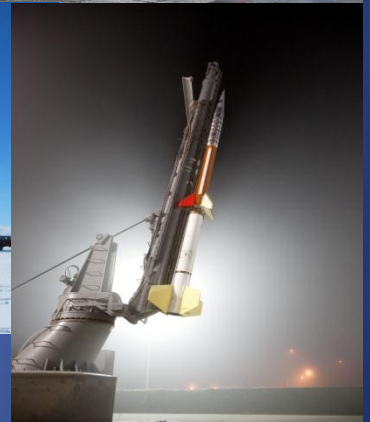


***NASA/Goddard Space Flight Center's
Wallops Flight Facility***

***2012 and
Beyond***

2012 - A Busy Year

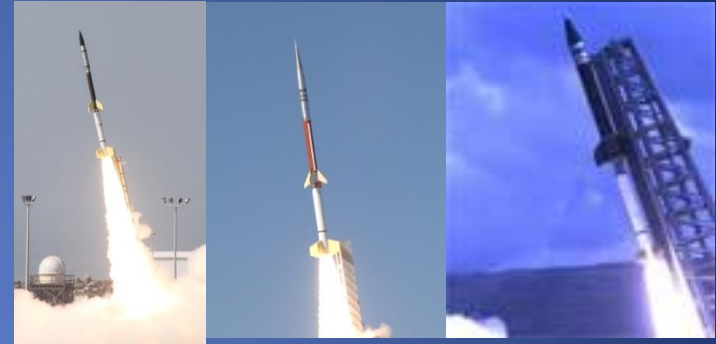
- 35 sounding rocket launches
- 13-17 scientific balloons
- 7 aircraft science projects/
914 flight hours
- Antares first launch



Launch Madness

Anomalous Transport Rocket Experiment (ATREX)

- March 15 – April 2
- Night
- 5 launches in about 5 minutes
- Study of upper level jet stream by Clemson University
- Chemical tracer released to “see” the winds
- May be visible throughout mid-Atlantic



Hurricane and Severe Storm Sentinel (HS3)

- 2 NASA-owned Global Hawks
- August – October, 2012 – 2014
- study of hurricane development
- 10 flights each year
- 30 hours duration
- Global Hawk Specs
 - 116 ft. wing span
 - 15 feet high
 - 44 feet long
 - 11,000 nautical mile range



Antares (formerly Taurus II)

- Work continues towards first launch
- Va. Governor asked for \$4M to complete new launch pad
- Orbital is reassessing status and will provide launch update Feb. 9



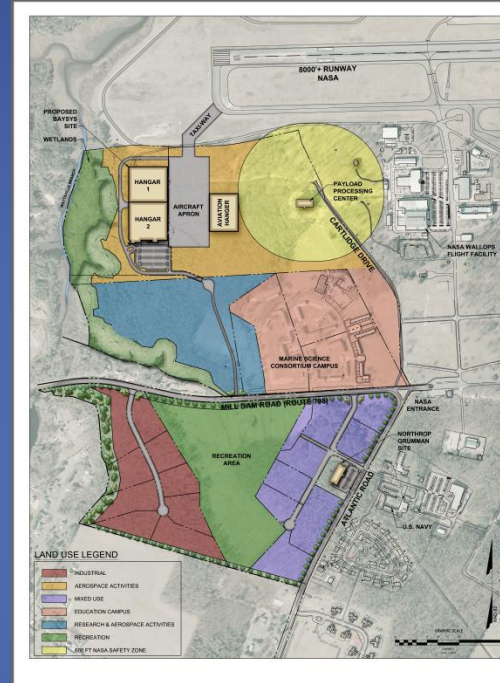
Opportunities

- Wallops Research Park
- Uninhabited Aerial Systems
- Expendable Launch Vehicles

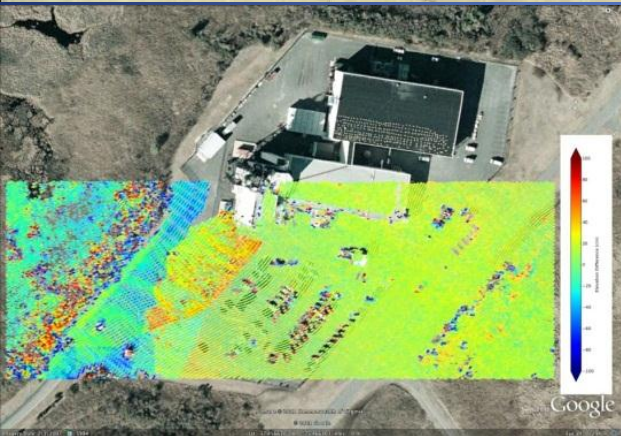


Research Park

- Continuing to work with Accomack County, Commonwealth of Virginia, and Marine Science Consortium to develop park
- Va. Governor included \$4M in 2012 budget request for taxiway to connect park and Wallops runway
- Pa. universities are investing nearly \$17M in Marine Science Consortium



Uninhabited Aerial Systems



- Establishment of NASA/Airborne Sciences Global Hawk Ground Station at WFF
- Addition of new UAS platforms managed by NASA/WFF
- Establishment of new North Wallops Island UAS Runway
- Earth Science and Technology Development
- Working with Va. and Md. Agencies to obtain FAA test site designation

Small and Medium Launch Vehicles

- Additional launch vehicles interested in Wallops beyond Antares and ISS re-supply
- Requires infrastructure Improvements
- New support facilities on north end of Wallops Island

