

Virginia State Parks





2002 GOB Facilities

88 new cabins & lodges in 10 parks - 260 in 17 parks

16 new camping cabins in 4 parks – 21 in 5 parks

318 new campsites in 8 parks – 1709 in 24 parks

20 new equestrian campsites in 2 parks



Kiptopeke – 6 bedroom family lodge



Claytor Lake – 3 bedroom



Bear Creek Lake – 2 bedroom



Occonechee – 2 bedroom

26 1 2007



High Bridge Trail State Park

Appomatox, Prince Edward, Farmville, Cumberland & Nottoway

Upgrade existing 32 mile railroad bed to trail for hiking, biking and horseback riding – 20 miles completed and open to public under MOU with VDOT

Remaining 10 miles to be completed under MOU with Town of Farmville – completion before June

Renovate 4 railroad bridges – completed

Renovation of historic High Bridge to connect trail – design underway and to be bid soon – completion expected August 2011

Add 6 new vault toilets along the trail - completion expected July 2010

45,098 visitors in 2009



Raymond R. "Andy" Guest Shenandoah River State Park

Warren County

Construction of 11
cabins, 4 camping
cabins, 2.5 miles of
roads and utilities, 33
campsite campground,
sewage treatment
plant, bridge and a
bathhouse

Completion expected
June 2010

New 4000 sq. ft. LEED
certified visitor center
with exhibit and
meeting space



Powhatan State Park on the Historic James

Development of new park including 2.5 miles of road and utilities, office and contact station, maintenance area, 3 bathrooms, picnic areas, equestrian area, boat slides, canoe in campground, 2 ranger residences

Completion estimate
March 2012

Partnership underway with Powhatan Public Schools, Virginia Commonwealth University and the Coastal Virginia Wildlife Observatory on wildlife mapping



2009 Revenue New Cabins

Bear Creek Lake, Cumberland County 12 cabins, 1 family lodge	\$236,977
Lake Anna, Spotsylvania County 10 cabins	\$206,921
James River, Buckingham County 14 cabins, 2 family lodges	\$220,701
Occoneechee, Mecklenburg County 11 cabins, 2 family lodges	\$244,102
Kiptopeke, Northampton County 5 family lodges	\$126,436
Claytor Lake, Pulaski County 1 cabin, 3 family lodges	\$175,947

New Cabins Under Development

Natural Tunnel

9 cabins, 1 lodge

Andy Guest/Shenandoah River

10 cabins, 1 lodge

Douthat

2 cabins, 1 lodge

2009 Revenues

New and Renovated Campgrounds and Camping Cabins

Belle Isle, Lancaster – campground	\$ 40,057
Lake Anna, Spotsylvania campground	\$121,291
6 camping cabins	\$ 26,772
James River, Buckingham - campground	\$ 64,507
Chippokes Plantation, Surry - campground	\$ 68,518
Pocahontas, Chesterfield campground	\$163,350
6 camping cabins	\$ 20,676
Hungry Mother, Smyth - campground	\$ 64,156
First Landing, Virginia Beach - campground	\$302,606

New Campgrounds Under Development

Andy Guest/Shenandoah River
campground
4 camping cabins

Not Open
Not Open

Natural Tunnel
campground

Not Open

Douthat (Whispering Pines)
campground

Not Open



2009 Revenue

New Equestrian Camping

Occoneechee, Mecklenburg	\$ 1,997
Grayson Highlands, Grayson	\$ 6,090
James River, Buckingham	Open 2010
Douthat, Alleghany	Not Open
Staunton River, Halifax	Not Open
Fairy Stone, Patrick	Not Open

Total New Cabins & Camping	\$2,091,104
----------------------------	-------------

Total All Cabin Revenue	\$4,398,823
Total All Camping Revenue	\$3,305,416
Grand Total Cabins & Camping	\$7,704,239

Total cabin and camping revenue in 1999 was \$3,043,108
A \$4.6 million increase in 10 years



Value Engineering

Item C-110.50#1h paragraph 2 of the 2008 Appropriation Act said, "The Department of Conservation and Recreation shall also complete a "value engineering" study for the approved prototype cabins to determine if adjustments are warranted in future cabin construction projects and shall report its findings on the study and this pilot project to the House Appropriations and Senate Finance Committees within six months of completing the project."

- The value engineering study was recently completed
- Recommendations are under review
- Numerous recommendations for reducing initial cost of cabins would result in several that may warrant change in future projects

9 New & 2 Renovated Visitor Centers 28 Visitor Centers in 26 Parks

Westmoreland



Smith Mountain
Lake - LEED



Shenandoah
River

Sailor's Creek
Battlefield - LEED



James River



Wilderness Road - LEED

Belle Isle



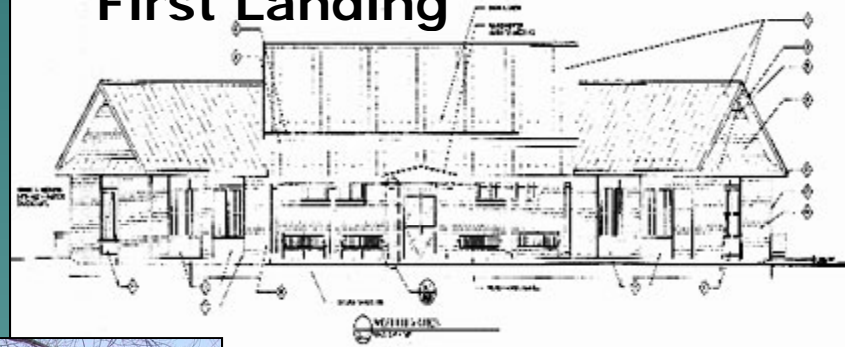
False Cape



Staunton River



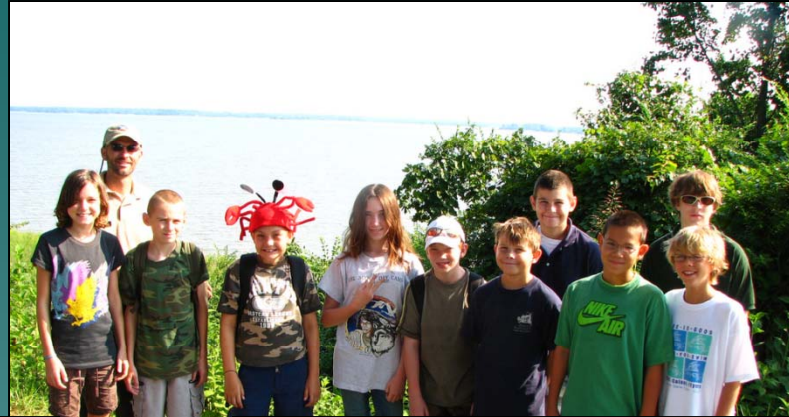
First Landing



Mason Neck



Virginia State Park Volunteers



235,500 volunteer hours valued at \$5 million

Youth Conservation Corps, Alternative Spring Break, Youth Service Corps and Americorps Workers



More than 7,000 student workers since 2002 and more than 306,000 interpretive and educational program participants in 2009

Partnerships

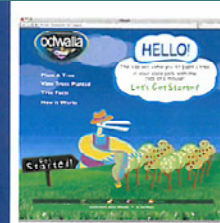
www.virginiaoutdoors.com



\$350,000 Dominion Power Grant



\$20,000 and free printing of 250,000 copies



ODWALLA "Plant A Tree" Program

TOTAL VALUE: **\$150,000**
TO DATE, \$200,000
PLANNED FOR 2010

The Plant a Tree Program allows a consumer to "plant" a tree in the state park system of their choice by visiting www.parkvisitor.com/odwalla. The 2009 program generated over 100,000 clicks in 5 weeks creating a fierce competition among states, high levels of social networking and viral activity. In 2010 this program is going to be open to all states who sign a program agreement with GSG.

\$24,000 for tree planting

\$300,000 Dominion Power Grant



2009 Attendance and Economic Impact

Attendance - 7,534,960

Economic Impact - \$175,565,001

